

**NEW  
Patent!!!**

*New Generation*

***i*-Fitting**



***i*-Fitting**

Integration Tube Fitting Series

Perfect installation is  
guaranteed by I-Fitting

 **BMT Co., Ltd.**  
[www.superlok.com](http://www.superlok.com)





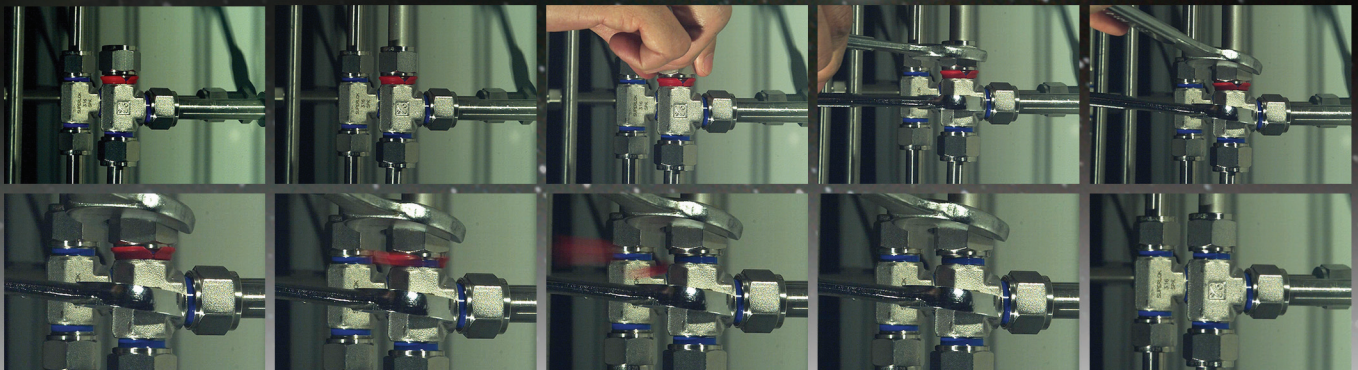
# **NOW, See! Hear! Touch!**

## ***Inaugurate a New Era of Fitting***

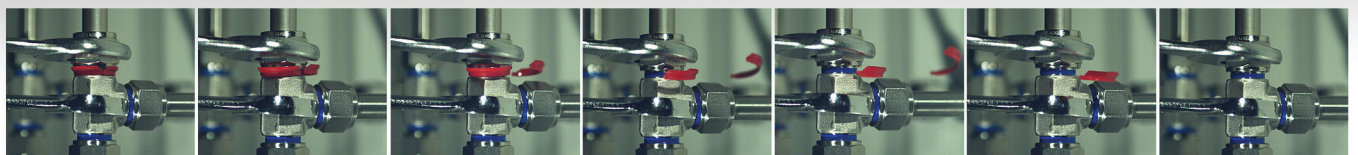
- Able to see to separate the Inspection Ring from the products with eyes.
- Able to hear to separate the Inspection Ring from the products with ears.
- Able to touch to separate the Inspection Ring from the products with hands.



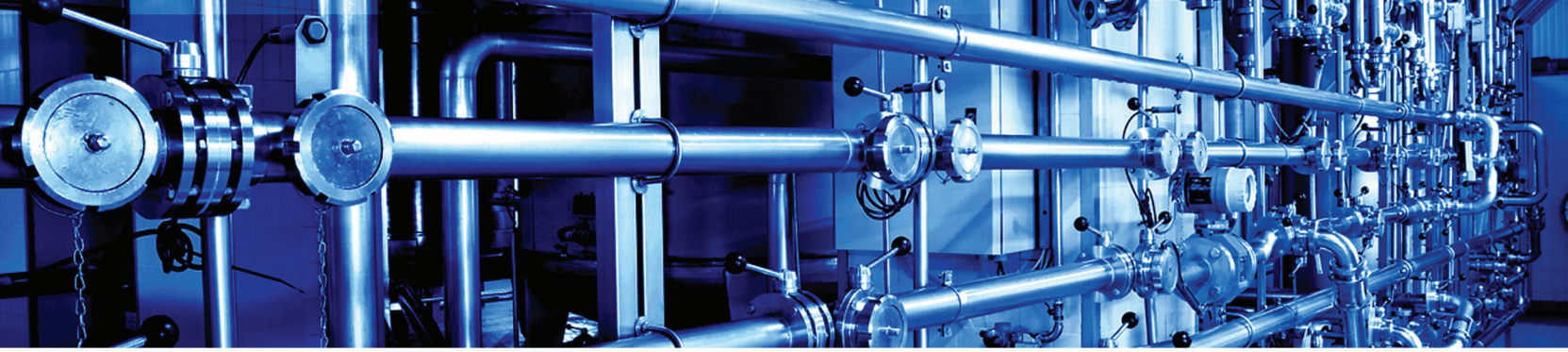
### ■ Install Process View



### ■ Detail View



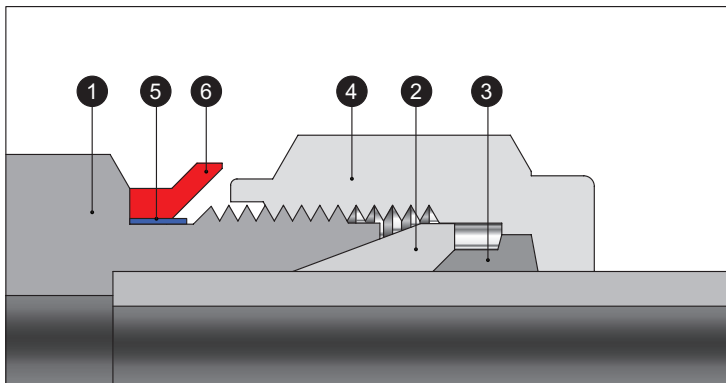




# Integration Tube Fitting Series *i*-Fitting

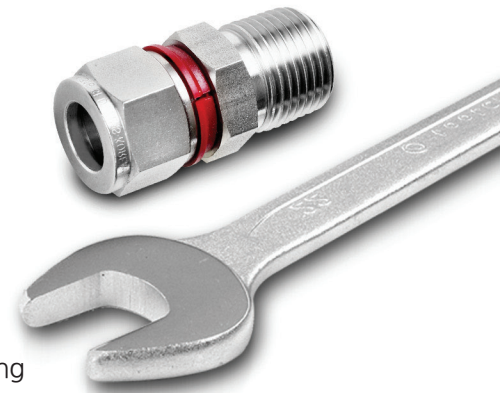
## Featured I-Fittings

- Reduce the installation time extremely.
  - Assure the perfect installation.
  - No required inspection gauge.
  - Make cost-down greatly by the innovated productivity.
  - Easy installation available even by non-skilled worker.
- 설치시간이 획기적으로 단축됩니다.
  - 완벽한 설치시공을 보장합니다.
  - 검사게이지가 필요하지 않습니다.
  - 생산성 향상으로 경비를 획기적으로 절감할 수 있습니다.
  - 비숙련공도 쉽게 시공이 가능합니다.



## Structure

- ① BODY
- ② FRONT FERRULE
- ③ BACK FERRULE
- ④ NUT
- ⑤ CHECK RING
- ⑥ INSPECTION RING



- I-Fittings is composed of Body, Front & Back Ferrules, Nut, Inspection Ring and Check Ring
  - I-Fittings has the structure to check the completion of installation separating Inspection Ring from the body
- 아이피팅은 바디, 프론트&백 패럴, 너트, 체결검사링, 체결체크링 으로 구성되어 있습니다.
  - 아이피팅은 체결검사링이 바디에서 완전히 분리됨으로써 시공이 완료되었음을 확인하는 구조 입니다.

## How the SUPERLOK I-Fitting Works

- Able to see to separate the Inspection Ring from the products with eyes.
  - Able to hear to separate the Inspection Ring from the products with ears.
  - Able to touch to separate the Inspection Ring from the products with hands.
- Inspection Ring이 분리되었음을 눈으로 확인.
  - Inspection Ring이 분리되었음을 소리로 확인.
  - Inspection Ring이 분리되었음을 만져서 확인.

## Installation Procedure



1

Prepare the required Integration Fitting composed of Body, Nut, Front & Back Ferrule and Inspection Ring properly.

바디, 너트, 프론트&백페럴 체결검사링으로 구성되어있는 인터그레이션피팅을 준비합니다.



2

Insert tube into the Fittings fully and turn Nut to tighten firmly not to turn completely.

튜브를 피팅안으로 완전히 밀어넣은후 너트를 돌려서 더이상 돌아가지 않을때 까지 잠그십시오.



3

Completion of installation is shown to rotate the Nut until Inspection Ring is taking off.

너트를 체결검사링이 몸체에서 분리될때까지 회전시키면 설치가 완료

## Ordering information

**SMCI - 8 - 8N - SS**

1

2

3

### 1 Type of fitting

To order, use "I" as a suffix to the desired Type of fitting ordering designation.

ex) **SMC** → **SMCI**  
SUPERLOK Tube Fitting Male Connector      Integration Fitting Male Connector

### 2 Size of Fitting

Tube O.D (inch)	1/4	3/8	1/2	3/4	1
Designation	4	6	8	12	16
Tube O.D (mm)	6	10	12	20	25

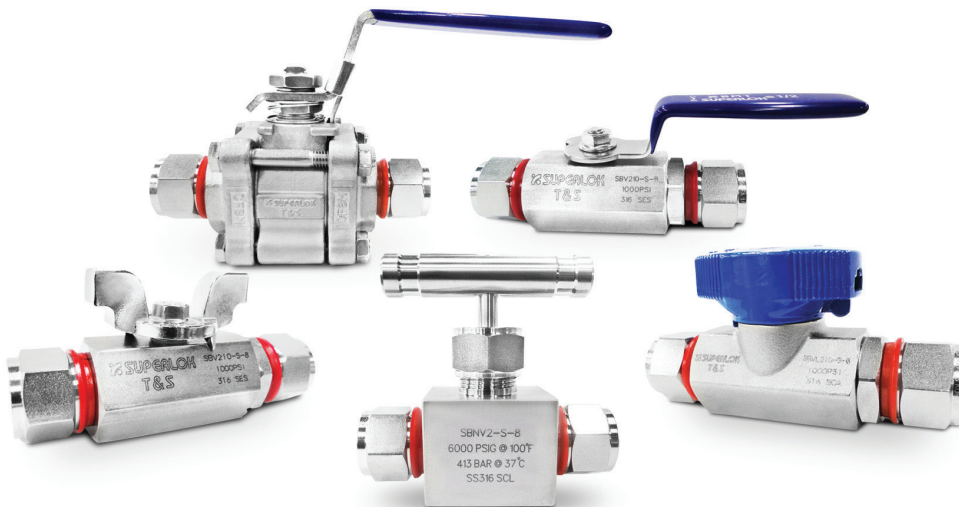
### 3 Material

A - Aluminum      B - Brass  
 C - Carbon Steel      SS - Stainless Steel  
 M - Monel Alloy 400  
 INC - Inconel Alloy 600

## Standard Size

The basic size of the superlok integration fittings are 1/4, 3/8, 1/2, 3/4, 1 inch, and the rest of the size can also be custom made to suit customer's requirements.

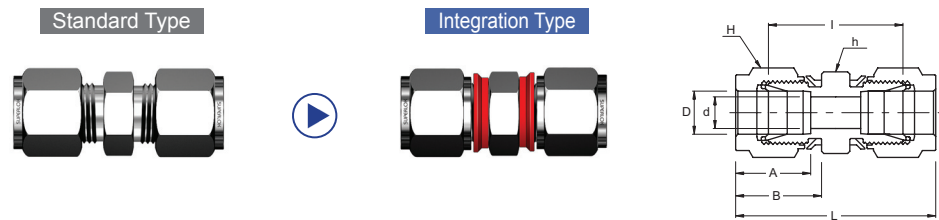
슈퍼락 인터그레이션 피팅은 1/4, 3/8, 1/2, 3/4, 1 inch 가 기본사이즈이며, 기타 사이즈는 고객의 요청에 의해 주문제작이 가능합니다.



**"Perfect installation is guaranteed by I-Fitting"**



**SUI**  
Union



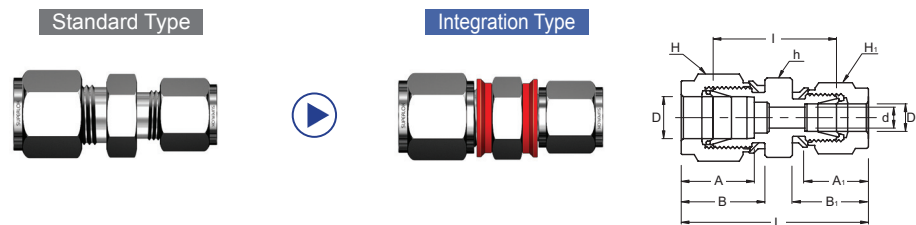
**Connects Fractional Tubes**

Part No.	Tube O.D. D (inch)	d Min	Width Across Flat		A	B	I	L
			h (inch)	H (inch)				
SUI - 4	1/4	4.82	1/2	9/16	15.24	17.78	26.16	40.89
SUI - 6	3/8	7.11	5/8	11/16	16.76	19.30	30.22	44.95
SUI - 8	1/2	10.41	13/16	7/8	22.86	21.84	30.98	51.30
SUI - 12	3/4	15.74	1-1/16	1-1/8	24.38	21.84	33.27	53.59
SUI - 16	1	22.35	1-3/8	1-1/2	31.24	26.41	40.38	64.77

**Connects Metric Tubes**

Part No.	Tube O.D. D (mm)	d Min	Width Across Flat		A	B	I	L
			h (mm)	H (mm)				
SUI - 6M	6	4.8	14	14	15.3	17.7	26.2	41.0
SUI - 8M	8	6.4	15	16	16.2	18.6	28.2	43.2
SUI - 10M	10	7.9	18	19	17.2	19.5	31.0	46.2
SUI - 12M	12	9.5	22	22	22.8	22.0	31.0	51.2
SUI - 16M	16	12.7	24	25	24.4	22.0	31.8	52.0
SUI - 18M	18	15.1	27	30	24.4	22.0	33.3	53.5
SUI - 20M	20	15.9	30	32	26.0	22.0	34.8	55.0
SUI - 25M	25	21.8	35	38	31.3	26.5	40.4	65.0

**SRUI**  
Reducing Union



**Connects Fractional Tubes**

Part No.	Tube O.D.		d Min	Width Across Flat			A	A <sub>1</sub>	B	B <sub>1</sub>	I	L
	D	D <sub>1</sub> (inch)		h (inch)	H (inch)	H <sub>1</sub> (inch)						
SRUI - 6 - 4	3/8	1/4	4.82	5/8	11/16	9/16	16.76	15.24	19.30	17.78	28.44	43.18
SRUI - 8 - 4	1/2	1/4	4.82	13/16	7/8	9/16	22.86	15.24	21.84	17.78	29.46	46.99
SRUI - 8 - 6	1/2	3/8	7.11	13/16	7/8	11/16	22.86	16.76	21.84	19.30	30.98	48.51
SRUI - 12 - 4	3/4	1/4	4.82	1-1/16	1-1/8	9/16	24.38	15.24	21.84	17.78	31.75	49.27
SRUI - 12 - 6	3/4	3/8	7.11	1-1/16	1-1/8	11/16	24.38	16.76	21.84	19.30	33.27	50.80
SRUI - 12 - 8	3/4	1/2	10.41	1-1/16	1-1/8	7/8	24.38	22.86	21.84	21.84	33.27	53.59
SRUI - 16 - 8	1	1/2	10.41	1-3/8	1-1/2	7/8	31.24	22.86	26.41	21.84	39.50	63.24
SRUI - 16 - 12	1	3/4	15.74	1-3/8	1-1/2	1-1/8	31.24	24.38	26.41	21.84	39.00	62.73

All dimensions in millimeters unless specified as "inch". Dimension are for reference only, subject to change  
Any size not in the list is available upon request.

**Connects Metric Tubes**

**SRUI Reducing Union**

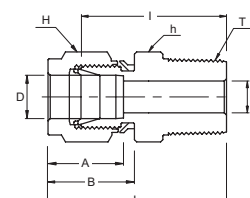
Part No.	Tube O.D.		d Min	Width Across Flat			A	A <sub>1</sub>	B	B <sub>1</sub>	I	L
	D	D <sub>1</sub> (mm)		h (mm)	H (mm)	H <sub>1</sub> (mm)						
SRUI - 8M - 9M	8	6	4.8	15	16	14	16.2	15.3	18.6	17.7	27.4	42.3
SRUI - 10M - 6M	10	6	4.8	18	19	14	17.2	15.3	19.5	17.7	29.5	44.5
SRUI - 10M - 8M	10	8	6.4	18	19	16	17.2	16.2	19.5	18.6	30.3	45.1
SRUI - 12M - 6M	12	6	4.8	22	22	14	22.8	15.3	22.0	17.7	29.5	47.0
SRUI - 12M - 8M	12	8	6.4	22	22	16	22.8	16.2	22.0	18.6	30.2	48.7
SRUI - 12M - 10M	12	10	7.9	22	22	19	22.8	17.2	22.0	19.5	31.0	48.7
SRUI - 16M - 12M	16	12	9.5	24	25	22	24.4	22.8	22.0	22.0	31.8	52.0
SRUI - 25M - 18M	25	18	15.0	35	38	30	31.3	24.4	26.5	22.0	38.6	61.0
SRUI - 25M - 20M	25	20	15.9	35	38	32	31.3	26.0	26.5	22.0	39.9	62.3

**SMCI Male Connector**

Standard Type



Integration Type



**Connects Fractional Tube To Female ISO Tapered Thread**

Part No.	Tube O.D. D (inch)	T R (PT)	d Min	Width Across Flat		A	B	I	L
				h (inch)	H (inch)				
SMCI - 4 - 6R	1/4	3/8	4.82	11/16	9/16	15.24	17.78	30.98	38.35
SMCI - 4 - 8R	1/4	1/2	4.82	7/8	9/16	15.24	17.78	37.33	44.70
SMCI - 6 - 4R	3/8	1/4	7.11	5/8	11/16	16.76	19.30	32.51	39.87
SMCI - 6 - 6R	3/8	3/8	7.11	11/16	11/16	16.76	19.30	32.51	39.87
SMCI - 6 - 8R	3/8	1/2	7.11	7/8	11/16	16.76	19.30	38.86	46.22
SMCI - 8 - 4R	1/2	1/4	7.11	13/16	7/8	22.86	21.84	33.27	43.43
SMCI - 8 - 6R	1/2	3/8	9.65	13/16	7/8	22.86	21.84	33.27	43.43
SMCI - 8 - 8R	1/2	1/2	10.41	7/8	7/8	22.86	21.84	38.86	49.02
SMCI - 8 - 12R	1/2	3/4	10.41	1-1/16	7/8	22.86	21.84	40.38	50.54
SMCI - 12 - 12R	3/4	3/4	15.74	1-1/16	1-1/8	24.38	21.84	40.38	50.54
SMCI - 16 - 16R	1	1	22.35	1-3/8	1-1/2	31.24	26.41	50.03	62.23

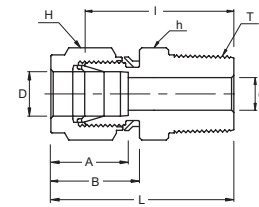
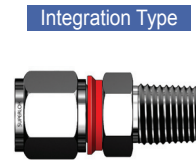
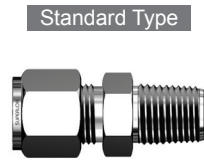
**Connects Metric Tube To Female ISO Tapered Thread**

Part No.	12Tube O.D. D (mm)	T R (PT)	d Min	Width Across Flat		A	B	I	L
				h (mm)	H (mm)				
SMCI - 6M - 2R	6	1/8	4.8	14	14	15.6	17.7	25.4	32.8
SMCI - 6M - 4R	6	1/4	4.8	14	14	15.3	17.7	30.5	37.9
SMCI - 6M - 6R	6	3/8	4.8	18	14	15.3	17.7	31.0	38.4
SMCI - 8M - 4R	8	1/4	6.4	15	16	16.2	18.6	31.2	38.7
SMCI - 8M - 6R	8	3/8	6.4	18	16	16.2	18.6	31.8	39.3
SMCI - 8M - 8R	8	1/2	6.4	22	16	16.2	18.6	38.1	45.6
SMCI - 10M - 6R	10	3/8	7.9	18	19	17.2	19.5	33.3	40.9
SMCI - 10M - 8R	10	1/2	7.9	22	19	17.2	19.5	38.9	46.5
SMCI - 12M - 8R	12	1/2	9.5	22	22	22.8	22.0	38.9	49.0
SMCI - 12M - 12R	12	3/4	9.5	27	22	22.8	22.0	40.4	50.5
SMCI - 16M - 8R	16	1/2	11.9	24	25	24.4	22.0	38.9	49.0
SMCI - 16M - 12R	16	3/4	12.7	27	25	24.4	22.0	40.4	50.5
SMCI - 18M - 8R	18	1/2	11.9	27	30	24.4	22.0	40.4	50.5
SMCI - 18M - 12R	18	3/4	15.1	27	30	24.4	22.0	40.4	50.5
SMCI - 20M - 8R	20	1/2	11.9	30	32	26.0	22.0	42.2	52.3
SMCI - 20M - 12R	20	3/4	15.9	30	32	26.0	22.0	42.2	52.3
SMCI - 25M - 12R	25	3/4	15.9	35	38	31.3	26.5	45.2	57.5
SMCI - 25M - 16R	25	1	21.8	35	38	31.3	26.5	50.0	62.3

All dimensions in millimeters unless specified as "inch". Dimension are for reference only, subject to change. Any size not in the list is available upon request.



# SMCI Male Connector



### Connects Fractional Tubes To Female NPT Thread

Part No.	Tube O.D. D (inch)	T (NPT)	d Min	Width Across Flat		A	B	I	L
				h (inch)	H (inch)				
SMCI - 4 - 4N	1/4	1/4	4.82	9/16	9/16	15.24	17.78	30.48	37.84
SMCI - 4 - 6N	1/4	3/8	4.82	11/16	9/16	15.24	17.78	30.98	38.35
SMCI - 4 - 8N	1/4	1/2	4.82	7/8	9/16	15.24	17.78	37.33	44.70
SMCI - 4 - 12N	1/4	3/4	4.82	1-1/16	9/16	15.24	17.78	38.86	46.22
SMCI - 6 - 4N	3/8	1/4	7.11	5/8	11/16	16.76	19.30	32.51	39.87
SMCI - 6 - 6N	3/8	3/8	7.11	11/16	11/16	16.76	19.30	32.51	39.87
SMCI - 6 - 8N	3/8	1/2	7.11	7/8	11/16	16.76	19.30	38.86	46.22
SMCI - 6 - 12N	3/8	3/4	7.11	1-1/16	11/16	16.76	19.30	40.38	47.75
SMCI - 8 - 6N	1/2	3/8	9.65	13/16	7/8	22.86	21.84	33.27	43.43
SMCI - 8 - 8N	1/2	1/2	10.41	7/8	7/8	22.86	21.84	38.86	49.02
SMCI - 8 - 12N	1/2	3/4	10.41	1-1/16	7/8	22.86	21.84	40.38	50.54
SMCI - 8 - 16N	1/2	1	10.41	1-3/8	7/8	22.86	21.84	46.99	57.15
SMCI - 12 - 8N	3/4	1/2	11.93	1-1/16	1-1/8	24.38	21.84	40.38	50.54
SMCI - 12 - 12N	3/4	3/4	15.74	1-1/16	1-1/8	24.38	21.84	40.38	50.54
SMCI - 12 - 16N	3/4	1	15.74	1-3/8	1-1/8	24.38	21.84	46.99	57.15
SMCI - 16 - 8N	1	1/2	11.93	1-3/8	1-1/2	31.24	26.41	45.21	57.40
SMCI - 16 - 12N	1	3/4	15.74	1-3/8	1-1/2	31.24	26.41	45.21	57.40
SMCI - 16 - 16N	1	1	22.35	1-3/8	1-1/2	31.24	26.41	50.03	62.23

### Connects Metric Tube To Female NPT Thread

Part No.	Tube O.D. D (mm)	T (NPT)	d Min	Width Across Flat		A	B	I	L
				h (mm)	H (mm)				
SMCI - 6M - 2N	6	1/5	4.8	14	14	15.3	17.7	25.4	32.8
SMCI - 6M - 4N	6	1/4	4.8	14	14	15.3	17.7	30.5	37.9
SMCI - 6M - 6N	6	3/8	4.8	18	14	15.3	17.7	31.0	38.4
SMCI - 8M - 4N	8	1/4	6.4	15	16	16.2	18.6	31.2	38.7
SMCI - 8M - 6N	8	3/8	6.4	18	16	16.2	18.6	31.8	39.3
SMCI - 8M - 8N	8	1/2	6.4	22	16	16.2	18.6	38.1	45.6
SMCI - 10M - 6N	10	3/8	7.9	18	19	17.2	19.5	33.3	40.9
SMCI - 10M - 8N	10	1/2	7.9	22	19	17.2	19.5	38.9	46.5
SMCI - 12M - 8N	12	1/2	9.5	22	22	22.8	22.0	38.9	49.0
SMCI - 12M - 12N	12	3/4	9.5	27	22	22.8	22.0	40.4	50.5
SMCI - 16M - 8N	16	1/2	11.9	24	25	24.4	22.0	38.9	49.0
SMCI - 16M - 12N	16	3/4	12.7	27	25	24.4	22.0	40.4	50.5
SMCI - 18M - 8N	18	1/2	11.9	27	30	24.4	22.0	40.4	50.5
SMCI - 18M - 12N	18	3/4	15.1	27	30	24.4	22.0	40.4	50.5
SMCI - 20M - 8N	20	1/2	15.9	30	32	26.0	22.0	42.2	52.3
SMCI - 20M - 12N	20	3/4	15.9	30	32	26.0	22.0	42.2	52.3
SMCI - 25M - 12N	25	3/4	15.9	35	38	31.3	26.5	45.2	57.5
SMCI - 25M - 16N	25	1	21.8	35	38	31.3	26.5	45.2	57.5

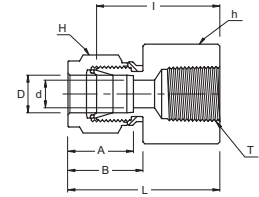
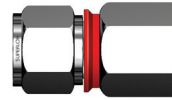
All dimensions in millimeters unless specified as "inch". Dimension are for reference only, subject to change  
Any size not in the list is available upon request.

# SFCI Female Connector

Standard Type



Integration Type



### Connects Fractional Tubes To Male NPT Thread

Part No.	Tube O.D. D (inch)	T * (NPT)	d Min	Width Across Flat		A	B	I	L
				h (inch)	H (inch)				
SFCI - 4 - 2N	1/4	1/8	4.82	9/16	9/16	15.24	17.78	23.87	31.24
SFCI - 4 - 4N	1/4	1/4	4.82	3/4	9/16	15.24	17.78	28.44	35.81
SFCI - 4 - 6N	1/4	3/8	4.82	7/8	9/16	15.24	17.78	30.22	37.59
SFCI - 4 - 8N	1/4	1/2	4.82	1-1/16	9/16	15.24	17.78	35.05	42.41
SFCI - 6 - 2N	3/8	1/8	7.11	5/8	11/16	16.76	19.30	25.40	32.76
SFCI - 6 - 4N	3/8	1/4	7.11	3/4	11/16	16.76	19.30	30.22	37.59
SFCI - 6 - 6N	3/8	3/8	7.11	7/8	11/16	16.76	19.30	31.75	39.11
SFCI - 6 - 8N	3/8	1/2	7.11	1-1/16	11/16	16.76	19.30	36.57	43.94
SFCI - 6 - 12N	3/8	3/4	7.11	1-5/16	11/16	16.76	19.30	40.38	47.75
SFCI - 8 - 4N	1/2	1/4	10.41	13/16	7/8	22.86	21.84	30.22	40.38
SFCI - 8 - 6N	1/2	3/8	10.41	7/8	7/8	22.86	21.84	31.75	41.91
SFCI - 8 - 8N	1/2	1/2	10.41	1-1/16	7/8	22.86	21.84	36.57	46.73
SFCI - 8 - 12N	1/2	3/4	10.41	1-5/16	7/8	22.86	21.84	38.10	48.26
SFCI - 12 - 8N	3/4	1/2	15.74	1-1/16	1-1/8	24.38	21.84	36.57	46.73
SFCI - 12 - 12N	3/4	3/4	15.74	1-5/16	1-1/8	24.38	21.84	38.10	48.26
SFCI - 16 - 12N	1	3/4	22.35	1-3/8	1-1/2	31.24	26.41	41.14	53.34
SFCI - 16 - 16N	1	1	22.35	1-5/8	1-1/2	31.24	26.41	50.03	62.23

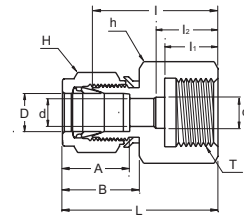
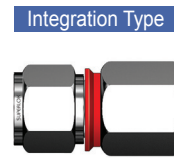
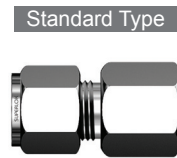
### Connects Metric Tubes To Male ISO Thread Thread

Part No.	Tube O.D. D (mm)	T * (NPT)	d Min	Width Across Flat		A	B	I	L
				h (mm)	H (mm)				
SFCI - 6M - 2N	6	1/8	4.8	14	14	15.3	17.7	23.9	31.3
SFCI - 6M - 4N	6	1/4	4.8	19	14	15.3	17.7	28.4	35.8
SFCI - 6M - 6N	6	3/8	4.8	22	14	15.3	17.7	30.2	37.6
SFCI - 8M - 8N	8	1/4	6.4	19	16	16.2	18.6	29.5	37.0
SFCI - 8M - 4N	8	3/8	6.4	22	16	16.2	18.6	31.0	38.5
SFCI - 8M - 6N	8	1/2	6.4	27	16	16.2	18.6	35.8	43.3
SFCI - 8M - 8N	10	3/8	7.9	22	19	19.5	19.5	31.8	39.4
SFCI - 10M - 6N	10	1/2	7.9	27	19	19.5	19.5	36.6	44.2
SFCI - 10M - 8N	12	1/2	9.5	27	22	22.0	22.0	36.6	46.7
SFCI - 12M - 8N	12	3/4	9.5	35	22	22.0	22.0	38.9	49.0
SFCI - 16M - 8N	16	1/2	12.7	27	25	22.0	22.0	36.8	46.9
SFCI - 20M - 12N	20	3/4	15.9	35	32	22.0	22.0	39.6	49.7
SFCI - 25M - 12N	25	3/4	21.8	41	38	26.5	26.5	41.1	53.4
SFCI - 25M - 16N	25	1	21.8	35	38	26.5	26.5	50.0	62.3

All dimensions in millimeters unless specified as "inch". Dimension are for reference only, subject to change  
Any size not in the list is available upon request.



# SGCI Gauge Connector



### Connects Fractional Tubes To ISO Parallel Thread

Part No.	Tube O.D. D (inch)	T G(PF)	d Min	d <sub>1</sub>	Width Across Flat		A	B	I	I <sub>1</sub>	I <sub>2</sub>	L
					h (inch)	H (inch)						
SGCI - 4 - 4G	1/4	1/4	4.82	5.58	3/4	9/16	15.24	17.78	30.22	13.00	17.00	37.59
SGCI - 4 - 6G	1/4	3/8	4.82	6.60	15/16	9/16	15.24	17.78	30.22	14.20	20.30	37.59
SGCI - 4 - 8G	1/4	1/2	4.82	6.60	1-1/16	9/16	15.24	17.78	36.07	18.80	24.90	43.43
SGCI - 6 - 4G	3/8	1/4	5.58	-	3/4	11/16	16.76	19.30	31.75	13.00	-	39.12
SGCI - 6 - 6G	3/8	3/8	6.60	-	15/16	11/16	16.76	19.30	31.24	14.20	-	38.61
SGCI - 6 - 8G	3/8	1/2	7.11	-	1-1/16	11/16	16.76	19.30	34.54	18.80	-	41.91
SGCI - 8 - 4G	1/2	1/4	5.58	-	7/8	7/8	22.86	21.84	31.80	13.00	-	41.95
SGCI - 8 - 6G	1/2	3/8	6.60	-	15/16	7/8	22.86	21.84	34.29	14.20	-	44.45
SGCI - 8 - 8G	1/2	1/2	7.11	7.11	1-1/16	7/8	22.86	21.84	38.10	18.80	-	48.26

### Connects Metric Tubes To ISO Parallel Thread

Part No.	Tube O.D. D (mm)	T G(PF)	d Min	d <sub>1</sub>	Width Across Flat		A	B	I	I <sub>1</sub>	I <sub>2</sub>	L
					h (mm)	H (mm)						
SGCI - 3M - 4G	6	1/4	4.8	5.5	19	14	15.3	17.7	30.2	13	17	37.6
SGCI - 6M - 4G	6	3/8	4.8	6.5	24	14	15.3	17.7	30.2	14	20	37.6
SGCI - 6M - 6G	6	1/2	4.8	7.0	27	14	15.3	17.7	36.1	19	25	43.5
SGCI - 8M - 4G	8	1/4	5.5	5.5	19	16	16.2	18.6	31.0	13	-	38.5
SGCI - 8M - 6G	8	3/8	6.5	6.5	24	16	16.2	18.6	28.7	14	-	36.2
SGCI - 8M - 8G	8	1/2	7.0	7.0	27	16	16.2	18.6	33.5	19	-	41.0
SGCI - 10M - 4G	10	1/4	5.5	5.5	19	19	17.2	19.5	31.8	13	-	39.4
SGCI - 10M - 6G	10	3/8	6.5	6.5	24	19	17.2	19.5	31.2	14	-	38.8
SGCI - 10M - 8G	10	1/2	7.0	7.0	27	19	17.2	19.5	34.5	19	-	42.1
SGCI - 12M - 4G	12	1/4	5.5	5.5	22	22	22.8	22.0	31.8	13	-	41.9
SGCI - 12M - 6G	12	3/8	6.5	6.5	24	22	22.8	22.0	34.3	14	-	44.4
SGCI - 12M - 8G	12	1/2	7.0	7.0	21	22	22.8	22.0	38.1	19	-	48.2
SGCI - 20M - 8G	20	1/2	7.0	7.0	30	32	26.0	22.0	44.2	19	-	54.3

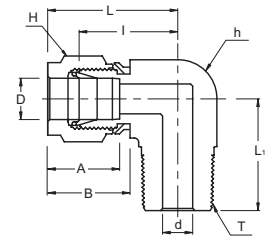
All dimensions in millimeters unless specified as "inch". Dimension are for reference only, subject to change  
Any size not in the list is available upon request.

**SMEI**  
Male Elbow

Standard Type



Integration Type



**Connects Fractional Tube To Female NPT Thread**

Part No.	Tube O.D. D (inch)	T (NPT)	d Min-	Width Across Flat		A	B	I	L	L <sub>1</sub>
				h (inch)	H (inch)					
SMEI - 4 - 2N	1/4	1/8	4.82	1/2	9/16	15.24	17.78	19.55	26.92	18.79
SMEI - 4 - 4N	1/4	1/4	4.82	1/2	9/16	15.24	17.78	19.55	26.92	23.36
SMEI - 4 - 6N	1/4	3/8	4.82	5/8	9/16	15.24	17.78	22.35	29.71	26.16
SMEI - 4 - 8N	1/4	1/2	4.82	13/16	9/16	15.24	17.78	24.38	31.75	33.02
SMEI - 6 - 2N	3/8	1/8	4.82	5/8	11/16	16.76	19.30	23.11	30.48	20.82
SMEI - 6 - 4N	3/8	1/4	7.11	5/8	11/16	16.76	19.30	23.11	30.48	25.40
SMEI - 6 - 6N	3/8	3/8	7.11	5/8	11/16	16.76	19.30	23.87	31.24	26.16
SMEI - 6 - 8N	3/8	1/2	7.11	13/16	11/16	16.76	19.30	25.90	33.27	33.02
SMEI - 6 - 12N	3/8	3/4	7.11	1-1/16	11/16	16.76	19.30	29.71	37.08	36.83
SMEI - 8 - 4N	1/2	1/4	7.11	13/16	7/8	22.86	21.84	25.90	36.06	28.19
SMEI - 8 - 6N	1/2	3/8	9.65	13/16	7/8	22.86	21.84	25.90	36.06	28.19
SMEI - 8 - 8N	1/2	1/2	10.41	13/16	7/8	22.86	21.84	25.90	36.06	33.02
SMEI - 8 - 12N	1/2	3/4	10.41	1-1/16	7/8	22.86	21.84	29.71	39.87	36.83
SMEI - 12 - 8N	3/4	1/2	11.93	1-1/16	1-1/8	24.38	21.84	29.71	39.87	36.83
SMEI - 12 - 12N	3/4	3/4	15.74	1-1/16	1-1/8	24.38	21.84	29.71	39.87	36.83
SMEI - 16 - 12N	1	3/4	15.74	1-3/8	1-1/2	31.24	26.41	36.83	49.02	41.65
SMEI - 16 - 16N	1	1	22.35	1-3/8	1-1/2	31.24	26.41	36.83	49.02	46.48

**Connects Metric Tubes To Female NPT Thread**

Part No.	Tube O.D. D (mm)	T (NPT)	d Min-	Width Across Flat		A	B	I	L	L <sub>1</sub>
				h (mm)	H (mm)					
SMEI - 6M - 2N	6	1/8	4.8	12.7	14	15.3	17.7	19.6	19.6	18.8
SMEI - 6M - 4N	6	1/4	4.8	12.7	14	15.3	17.7	19.6	19.6	23.4
SMEI - 6M - 6N	6	3/8	4.8	15.9	14	15.3	17.7	22.4	22.4	26.2
SMEI - 8M - 4N	8	1/4	6.4	14.3	16	16.2	18.6	21.3	28.8	24.4
SMEI - 8M - 6N	8	3/8	6.4	15.9	16	16.2	18.6	23.1	30.6	26.2
SMEI - 8M - 8N	8	1/2	6.4	20.6	16	16.2	18.6	25.1	25.1	33.0
SMEI - 10M - 6N	10	3/8	7.9	17.5	19	17.2	19.5	23.9	31.5	26.1
SMEI - 10M - 8N	10	1/2	7.9	20.6	19	17.2	19.5	25.9	33.5	33.0
SMEI - 12M - 8N	12	1/2	9.5	20.6	22	22.8	22.0	25.9	36.0	33.0
SMEI - 12M - 12N	12	3/4	9.5	27.0	22	22.8	22.0	29.7	39.8	36.8
SMEI - 16M - 8N	16	1/2	11.9	23.8	25	24.4	22.0	27.9	38.0	35.1
SMEI - 16M - 12N	16	3/4	12.7	27.0	25	24.4	22.0	29.7	39.8	36.8
SMEI - 18M - 8N	18	1/2	11.9	27.0	30	24.4	22.0	29.7	39.8	36.8
SMEI - 18M - 12N	18	3/4	15.1	27.0	30	24.4	22.0	29.7	39.8	36.8
SMEI - 20M - 8N	20	1/2	11.9	34.9	32	26.0	22.0	34.5	44.6	41.7
SMEI - 20M - 12N	20	3/4	15.9	34.9	32	26.0	22.0	34.5	34.5	41.7
SMEI - 25M - 12N	25	3/4	15.9	34.9	38	31.3	26.5	36.8	49.1	41.7
SMEI - 25M - 16N	25	1	21.8	34.9	38	31.3	26.5	36.8	49.1	46.5

All dimensions in millimeters unless specified as "inch". Dimension are for reference only, subject to change  
Any size not in the list is available upon request.

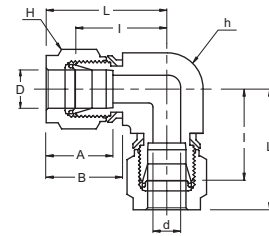


# SUEI Union Elbow

Standard Type



Integration Type



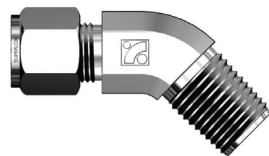
### Connects Fractional Tubes

Part No.	Tube O.D. D (inch)	d Min	Width Across Flat		A	B	I	L
			h (inch)	H (inch)				
SUEI - 4	1/4	4.82	1/2	9/16	15.24	17.78	20.10	27.40
SUEI - 6	3/8	7.11	5/8	11/16	16.76	19.30	23.11	30.48
SUEI - 8	1/2	10.41	13/16	7/8	22.86	21.84	25.90	36.06
SUEI - 12	3/4	15.74	1-1/16	1-1/8	24.38	21.84	29.71	39.87
SUEI - 16	1	22.35	1-3/8	1-1/2	31.24	26.41	36.83	49.02

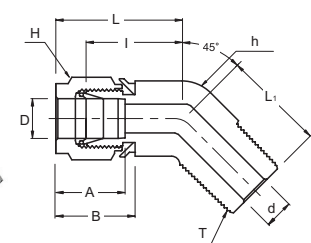
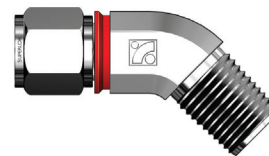
### Connects Metric Tubes

Part No.	Tube O.D. D (mm)	d Min	Width Across Flat		A	B	I	L
			h (mm)	H (mm)				
SUEI - 6M	6	4.8	12.7	14	15.3	17.7	19.6	27.0
SUEI - 8M	8	6.4	15.9	16	16.2	18.6	22.4	29.9
SUEI - 10M	10	7.9	17.5	19	17.2	19.5	23.9	31.5
SUEI - 12M	12	9.5	20.6	22	22.8	22.0	25.9	36.0
SUEI - 16M	16	12.7	23.8	25	24.4	22.0	27.9	38.0
SUEI - 18M	18	15.1	27.0	30	24.4	22.0	29.7	39.8
SUEI - 20M	20	15.9	34.9	32	26.0	22.0	34.5	44.6
SUEI - 25M	25	21.8	34.9	38	31.3	26.5	36.8	49.1

Standard Type



Integration Type



# SHMEI 45° Male Elbow

### Connects Fractional Tubes To Female NPT Thread

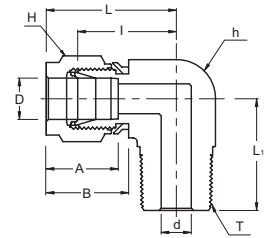
Part No.	Tube O.D. D (inch)	T* (NPT)	d Min	Width Across Flat		A	B	I	L	L <sub>1</sub>
				h (inch)	H (inch)					
SHMEI - 4 - 2R	1/4	1/8	4.82	1/2	9/16	15.24	17.78	17.27	24.63	16.51
SHMEI - 4 - 4R	1/4	1/4	4.82	1/2	9/16	15.24	17.78	17.27	24.63	21.08
SHMEI - 6 - 2R	3/8	1/8	4.82	5/8	11/16	16.76	19.30	20.57	27.94	18.28
SHMEI - 6 - 4R	3/8	1/4	7.11	5/8	11/16	16.76	19.30	20.57	27.94	22.86
SHMEI - 6 - 6R	3/8	3/8	7.11	13/16	11/16	16.76	19.30	21.84	29.21	24.13
SHMEI - 8 - 6R	1/2	3/8	9.65	13/16	7/8	22.86	21.84	21.84	32.00	24.13
SHMEI - 8 - 8R	1/2	1/2	10.41	13/16	7/8	22.86	21.84	21.84	32.00	28.95

### Connects Metric Tubes To Female NPT Thread

Part No.	Tube O.D. D (mm)	T* (NPT)	d Min	Width Across Flat		A	B	I	L	L <sub>1</sub>
				h (mm)	H (mm)					
SHMEI - 6M - 2R	6	1/8	4.82	12.7	14.3	15.24	17.78	17.27	24.63	16.51
SHMEI - 6M - 4R	6	1/4	4.82	12.7	14.3	15.24	17.78	17.27	24.63	21.08
SHMEI - 12M - 6R	12	3/8	9.65	20.6	22.2	22.86	21.84	21.84	32.00	24.13
SHMEI - 12M - 8R	12	1/2	10.41	20.6	22.2	22.86	21.84	21.84	32.00	28.95

All dimensions in millimeters unless specified as "inch". Dimension are for reference only, subject to change  
Any size not in the list is available upon request.

# SMEI Male Elbow



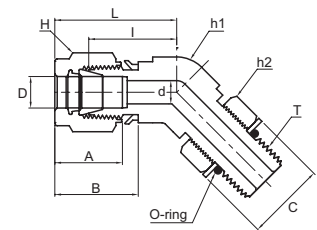
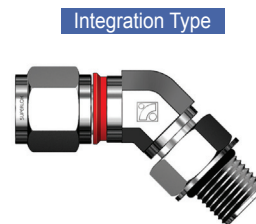
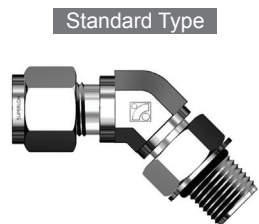
### Connects Fractional Tubes To Female ISO Tapered Thread

Part No.	Tube O.D. D (inch)	T R (RT)	d Min	Width Across Flat		A	B	I	L	L <sub>1</sub>
				h (inch)	H (inch)					
SMEI - 4 - 2R	1/4	1/8	4.82	1/2	9/16	15.24	17.78	19.55	26.92	18.79
SMEI - 4 - 4R	1/4	1/4	4.82	1/2	9/16	15.24	17.78	19.55	26.92	23.36
SMEI - 4 - 6R	1/4	3/8	4.82	5/8	9/16	15.24	17.78	22.35	29.71	26.16
SMEI - 4 - 8R	1/4	1/2	4.82	13/16	9/16	15.24	17.78	24.38	31.75	33.02
SMEI - 6 - 4R	3/8	1/4	7.11	5/8	11/16	16.76	19.30	23.11	30.48	25.40
SMEI - 6 - 6R	3/8	3/8	7.11	5/8	11/16	16.76	19.30	23.87	31.24	26.16
SMEI - 8 - 6R	1/2	3/8	9.65	13/16	7/8	22.86	21.84	25.91	36.07	28.20
SMEI - 8 - 8R	1/2	1/2	10.41	13/16	7/8	22.86	21.84	25.91	36.07	33.02

### Connects Metric Tubes To Female ISO Tapered Thread

Part No.	Tube O.D. D (mm)	T R (RT)	d Min	Width Across Flat		A	B	I	L	L <sub>1</sub>
				h (mm)	H (mm)					
SMEI - 6M - 2R	6	1/8	4.8	12.7	14	15.3	17.7	19.6	27.0	18.8
SMEI - 6M - 4R	6	4.8	4.8	12.7	14	15.3	17.3	19.6	27.0	23.4
SMEI - 6M - 6R	6	4.8	4.8	15.9	14	15.3	17.7	22.4	29.8	26.2
SMEI - 8M - 4R	8	1/4	6.4	14.3	16	16.2	18.6	21.3	28.8	24.4
SMEI - 8M - 6R	8	3/8	6.4	15.9	16	16.2	18.6	23.1	30.6	26.2
SMEI - 8M - 8R	8	1/2	6.4	20.6	16	16.2	18.6	25.1	32.6	33.0
SMEI - 10M - 6R	10	3/8	7.9	17.5	19	17.2	19.5	23.9	31.5	26.2
SMEI - 10M - 8R	10	1/2	7.9	20.6	19	17.2	19.5	25.9	33.5	33.0
SMEI - 12M - 8R	12	1/2	9.5	20.6	22	22.8	22.0	25.9	36.0	33.0
SMEI - 12M - 12R	12	3/4	9.5	27.0	22	22.8	22.0	29.7	39.8	36.8
SMEI - 16M - 8R	16	1/2	11.9	23.8	25	24.4	22.0	27.9	38.0	35.1
SMEI - 18M - 8R	18	1/2	11.9	27.0	30	24.4	22.0	29.7	39.8	36.8
SMEI - 18M - 12R	18	3/4	15.1	27.0	30	24.4	22.0	29.7	39.8	36.8
SMEI - 20M - 8R	20	1/2	11.9	34.9	32	26.0	22.0	34.5	44.6	41.7
SMEI - 20M - 12R	20	3/4	15.9	34.9	32	26.0	22.0	34.5	44.6	41.7
SMEI - 25M - 15R	25	3/4	15.9	34.9	38	31.3	26.5	36.8	49.1	41.7
SMEI - 25M - 16R	25	1	21.8	34.9	38	31.3	26.5	36.8	49.1	46.5

# SPHMEI 45° Positionable Male Elbow



### Connects Fractional Tubes To SAE/MS Straight Thread

Part No.	Tube O.D. D (inch)	T (U)	d Min	Width Across Flat			A	B	I	L	L <sub>1</sub>	C
				h <sub>1</sub>	h <sub>2</sub>	H						
SPHMEI - 4 - 4U	1/4	7/16-20	4.83	1/2	9/16	9/16	15.24	17.78	18.29	25.64	25.65	16.51
SPHMEI - 6 - 6U	3/8	9/16-18	7.11	5/8	11/16	11/16	16.76	19.30	20.57	27.94	28.19	20.07
SPHMEI - 8 - 8U	1/2	3/4-16	10.41	13/16	7/8	7/8	22.86	21.84	21.84	32.00	32.26	25.65
SPHMEI - 12 - 12U	3/4	1-1/16-12	15.75	1-1/8	1-1/4	1-1/8	24.38	24.84	29.72	39.88	47.24	36.58
SPHMEI - 16 - 16U	1	1-5/16-12	22.35	1-3/8	1-1/2	1-1/2	31.24	26.42	35.31	47.50	50.55	43.94

All dimensions in millimeters unless specified as "inch". Dimension are for reference only, subject to change Any size not in the list is available upon request.



# SPHMEI

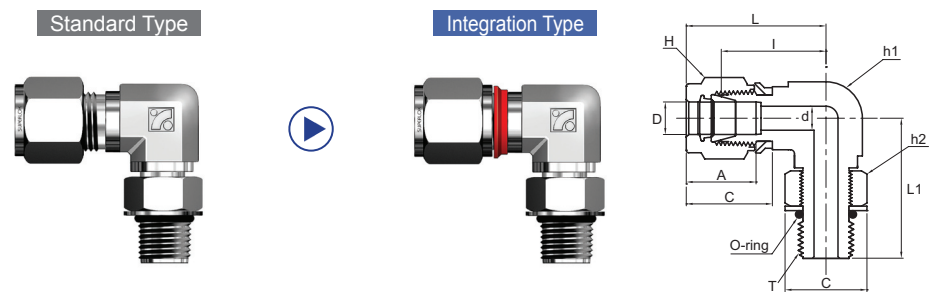
## 45° Positionable Male Elbow

Connects Metric Tubes To SAE/MS Straight Thread

Part No.	Tube O.D. D (mm)	T (U)	d Min	Width Across Flat			A	B	I	L	L1	C
				h1	h2	H						
SPHMEI - 6M - 4U	6	7/16-20	4.83	12.7	14.3	14.3	15.24	17.78	18.29	25.64	25.65	16.51
SPHMEI - 12M - 8U	12	3/4-16	10.41	20.6	22.2	22.2	22.86	21.84	21.84	32.00	32.26	25.65
SPHMEI - 18M - 12U	18	1-1/16-12	15.75	28.6	31.7	28.6	24.38	24.84	29.72	39.88	47.24	36.58
SPHMEI - 25M - 16U	20	1-5/16-12	22.35	34.9	38.1	38.1	31.24	26.42	35.31	47.50	50.55	43.94

# SPMEI

## Positionable Male Elbow



Connects Fractional Tubes To Female ISO Parallel Thread

Part No.	Tube O.D. D (inch)	T (PF)	d Min	Width Across Flat			A	B	I	L	L1	C
				h1	h2	H						
SPMEI - 4 - 2G	1/4	1/8	4.06	1/2	9/16	9/16	15.24	17.78	19.56	26.92	26.42	17.27
SPMEI - 4 - 4G	1/4	1/4	4.83	5/8	3/4	9/16	15.24	17.78	21.59	28.96	32.26	22.86
SPMEI - 6 - 4G	3/8	1/4	5.84	5/8	3/4	11/16	16.76	19.30	23.11	30.48	32.26	22.86
SPMEI - 6 - 6G	3/8	3/8	7.11	13/16	7/8	11/16	16.76	19.30	25.91	33.27	37.08	26.42
SPMEI - 8 - 4G	3/8	1/4	5.84	13/16	3/4	7/8	22.86	21.84	25.91	36.07	35.05	26.42
SPMEI - 8 - 6G	1/2	3/8	7.87	13/16	7/8	7/8	22.86	21.84	25.91	36.07	37.08	22.86
SPMEI - 8 - 8G	1/2	1/2	10.41	15/16	1-1/16	7/8	22.86	21.84	27.94	38.10	43.43	26.42
SPMEI - 12 - 8G	3/4	1/2	11.94	1-1/16	1-1/16	1-1/8	24.38	21.84	29.72	39.88	45.21	32.00
SPMEI - 12 - 12G	3/4	3/4	15.75	1-1/16	1-3/8	1-1/8	24.38	21.84	29.72	39.88	48.77	41.15
SPMEI - 16 - 12G	1	3/4	15.75	1-3/8	1-3/8	1-1/2	31.24	26.42	36.83	49.02	53.34	41.15
SPMEI - 16 - 16G	1	1	19.81	1-3/8	1-3/8	1-1/2	31.24	26.42	36.83	49.02	53.59	48.51

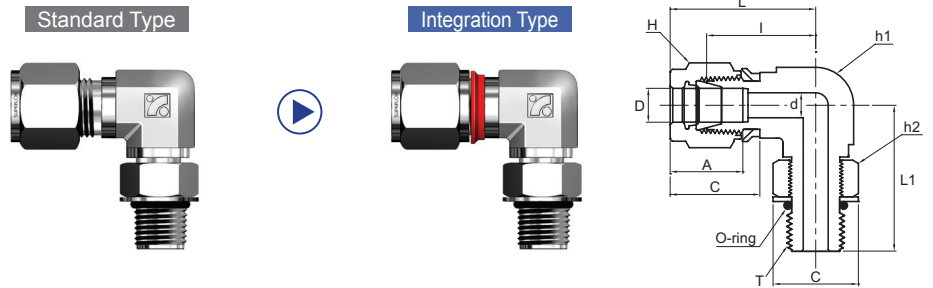
Connects Metric Tubes To Female ISO Parallel Thread

Part No.	Tube O.D. D (mm)	T (PF)	d Min	Width Across Flat			A	B	I	L	L1	C
				h1	h2	H						
SPMEI - 6M - 2G	6	1/8	4.0	12.7	14.3	14	15.3	17.7	19.6	27.0	26.4	17.3
SPMEI - 6M - 4G	6	1/4	4.8	22.2	19	14	15.3	17.7	21.6	29.0	32.3	22.9
SPMEI - 8M - 2G	8	1/8	4.0	14.3	14.3	16	16.2	18.6	21.3	28.8	27.4	17.3
SPMEI - 8M - 4G	8	1/4	5.9	22.2	19	16	16.2	18.6	22.4	29.9	32.2	22.9
SPMEI - 10M - 4G	10	1/4	5.9	20.6	19	19	17.2	19.5	25.9	33.5	35.0	22.9
SPMEI - 10M - 6G	10	3/8	7.9	20.6	22.2	19	17.2	19.5	25.9	33.5	37.1	26.4
SPMEI - 12M - 4G	12	1/4	5.9	20.6	19	22	22.8	22.0	25.9	36.0	35.0	22.9
SPMEI - 12M - 8G	12	1/2	9.5	23.8	27	22	22.8	22.0	27.9	38.0	43.4	32.0
SPMEI - 12M - 12G	12	3/4	9.5	27	34.9	22	22.8	22.0	29.7	39.8	48.8	41.1

All dimensions in millimeters unless specified as "inch". Dimension are for reference only, subject to change. Any size not in the list is available upon request.

# SPMEI

## Positionable Male Elbow



### Connects Fractional Tubes To SAE/MS Straight Thread

Part No.	Tube O.D. D (inch)	T (U)	d Min	Width Across Flat			A	B	I	L	L1	C
				h1	h2	H						
SPMEI - 4 - 4U	1/4	7/16-20	4.83	1/2	9/16	9/16	15.24	17.78	21.08	28.45	28.45	16.51
SPMEI - 4 - 6U	1/4	9/16-18	4.83	5/8	11/16	9/16	15.24	17.78	23.11	30.48	32.26	20.07
SPMEI - 6 - 6U	3/8	9/16-18	7.11	5/8	11/16	11/16	16.76	19.30	24.64	32.00	32.26	20.07
SPMEI - 6 - 8U	3/8	3/4-16	7.11	13/16	7/8	11/16	16.76	19.30	27.43	34.80	37.85	25.65
SPMEI - 8 - 8U	1/2	3/4-16	10.41	13/16	7/8	7/8	22.86	21.84	27.43	37.59	37.85	25.65
SPMEI - 12 - 12U	3/4	1-1/16-12	15.75	1-1/16	1-1/4	1-1/8	24.38	24.84	31.24	41.40	48.77	36.58
SPMEI - 16 - 16U	1	1-5/16-12	22.35	1-3/8	1-1/2	1-1/2	31.24	26.42	38.35	50.55	53.59	43.94

### Connects Metric Tubes To SAE/MS Straight Thread

Part No.	Tube O.D. D (mm)	T (U)	d Min	Width Across Flat			A	B	I	L	L1	C
				h1	h2	H						
SPMEI - 6M - 4U	6	7/16-20	4.83	12.7	14.3	14.3	15.24	17.78	21.08	28.45	28.45	16.51
SPMEI - 12M - 8U	12	3/4-16	10.41	20.6	22.2	22.2	22.86	21.84	27.43	37.59	37.85	25.65
SPMEI - 18M - 12U	18	1-1/16-12	15.75	27	31.7	28.6	24.38	24.84	31.24	41.40	48.77	36.58
SPMEI - 25M - 16U	20	1-5/16-12	22.35	34.9	38.1	38.1	31.24	26.42	38.35	50.55	53.59	43.94

# SUTI

## Union Tee



### Connects Fractional Tubes

Part No.	Tube O.D. D (inch)	d Min	Width Across Flat		A	B	I	L
			h (inch)	H (inch)				
SUTI - 4	1/4	4.82	1/2	9/16	15.24	17.78	30.98	38.35
SUTI - 6	3/8	7.11	5/8	11/16	15.24	17.78	37.33	44.70
SUTI - 8	1/2	10.41	13/16	7/8	16.76	19.30	32.51	39.87
SUTI - 12	3/4	15.74	1-1/16	1-1/8	16.76	19.30	32.51	39.87
SUTI - 16	1	22.35	1-3/8	1-1/2	16.76	19.30	38.86	46.22

All dimensions in millimeters unless specified as "inch". Dimension are for reference only, subject to change. Any size not in the list is available upon request.



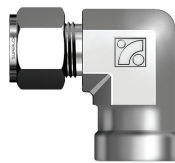
# SUTI Union Tee

Connects Metric Tubes

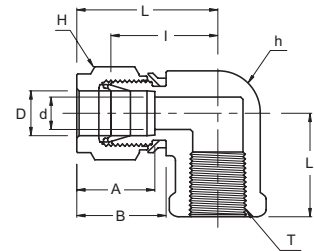
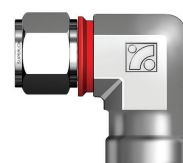
Part No.	Tube O.D. D (mm)	d Min	Width Across Flat		A	B	I	L
			h (mm)	H (mm)				
SUTI - 6M	6	4.8	12.7	14	15.3	17.7	19.6	27.0
SUTI - 8M	8	6.4	15.9	16	16.2	18.6	22.4	
SUTI - 10M	10	7.9	17.5	19	17.2	19.5	23.9	31.5
SUTI - 12M	12	9.5	20.6	22	22.8	22.0	25.9	36.0
SUTI - 16M	16	12.7	25.4	25	24.4	22.0	28.7	38.8
SUTI - 18M	18	15.1	27.0	30	24.4	22.0	29.7	38.8
SUTI - 20M	20	15.9	34.9	32	26.0	22.0	34.5	44.6
SUTI - 25M	25	21.8	34.9	38	31.3	26.5	36.8	49.1

# SFEI Female Elbow

Standard Type



Integration Type



Connects Fractional Tubes To Male NPT Thread

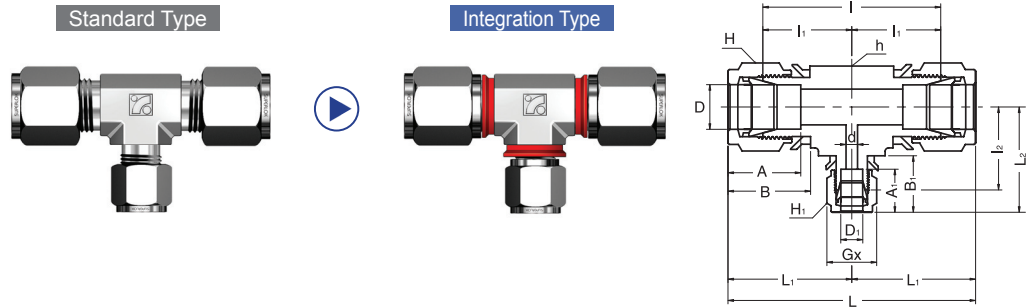
Part No.	1Tube O.D. D (inch)	T* (NPT)	d Min	Width Across Flat		A	B	I	L	L <sub>1</sub>
				h (inch)	H (inch)					
SFEI - 4 - 2N	1/4	1/8	4.82	1/2	9/16	15.24	17.78	19.55	26.92	19.05
SFEI - 4 - 4N	1/4	1/4	4.82	11/16	9/16	15.24	17.78	22.35	29.71	22.35
SFEI - 4 - 6N	1/4	3/8	4.82	13/16	9/16	15.24	17.78	24.38	31.75	22.35
SFEI - 4 - 8N	1/4	1/2	4.82	1	9/16	15.24	17.78	27.17	34.54	28.44
SFEI - 6 - 2N	3/8	1/8	7.11	5/8	11/16	16.76	19.30	23.11	30.48	19.05
SFEI - 6 - 4N	3/8	1/4	7.11	11/16	11/16	16.76	19.30	23.87	31.24	22.35
SFEI - 6 - 6N	3/8	3/8	7.11	13/16	11/16	16.76	19.30	25.90	33.27	22.35
SFEI - 6 - 8N	3/8	1/2	7.11	1	11/16	16.76	19.30	28.70	36.06	28.44
SFEI - 8 - 4N	1/2	1/4	10.41	13/16	7/8	22.86	21.84	25.90	36.06	22.35
SFEI - 8 - 6N	1/2	3/8	10.41	13/16	7/8	22.86	21.84	25.90	36.06	22.35
SFEI - 8 - 8N	1/2	1/2	10.41	1	7/8	22.86	21.84	28.70	38.86	37.00
SFEI - 12 - 8N	3/4	1/2	15.74	1-1/16	1-1/8	24.38	21.84	29.71	39.87	28.44
SFEI - 12 - 12N	3/4	3/4	15.74	1-3/8	1-1/8	24.38	21.84	34.54	44.70	31.75
SFEI - 16 - 12N	1	3/4	22.35	1-3/8	1-1/2	31.24	26.41	36.83	49.02	31.75
SFEI - 16 - 16N	1	1	22.35	1-11/16	1-1/2	31.24	26.41	41.40	53.59	38.10

Connects Metric Tubes To Male NPT Thread

Part No.	1Tube O.D. D (mm)	T* (NPT)	d Min	Width Across Flat		A	B	I	L	L <sub>1</sub>
				h (mm)	H (mm)					
SFEI - 6M - 4N	6	1/4	4.8	17.4	14	15.3	17.7	22.4	29.8	22.40
SFEI - 6M - 6N	6	3/8	4.8	20.6	14	15.3	17.7	24.4	31.7	22.40
SFEI - 6M - 8N	6	1/2	4.8	25.4	14	15.3	17.7	27.2	34.6	28.40
SFEI - 8M - 4N	8	1/4	6.4	17.4	16	16.2	18.6	23.1	30.6	22.40
SFEI - 8M - 8N	8	1/2	6.4	20.6	16	16.2	18.6	28.0	35.2	28.40
SFEI - 10M - 4N	10	1/4	7.9	17.4	19	17.2	19.5	25.9	33.5	22.40
SFEI - 10M - 6N	10	3/8	7.9	20.6	19	17.2	19.5	25.9	33.5	22.40
SFEI - 12M - 6N	12	3/8	9.5	20.6	22	22.8	22.0	25.9	36.2	22.35
SFEI - 12M - 8N	12	1/2	9.5	25.4	22	22.8	22.0	28.7	38.8	28.40

All dimensions in millimeters unless specified as "inch". Dimension are for reference only, subject to change  
Any size not in the list is available upon request.

# SRUTI Reducing Union Tee



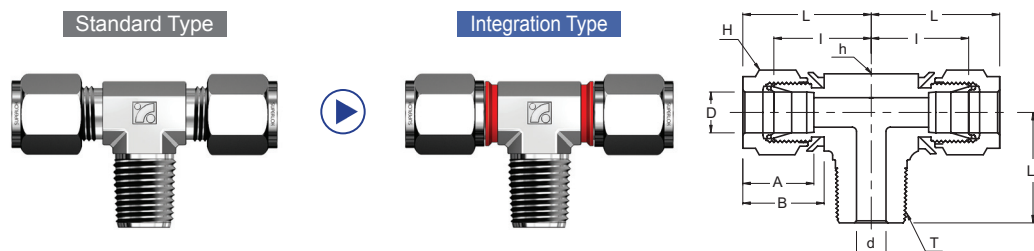
### Connects Fractional Tubes

Part No.	Tube O.D.		d Min	Width Across Flat			A	A1	B	B1	I	I1	I2	L	L1	L2
	D (inch)	D1 (inch)		h (inch)	H (inch)	H1 (inch)										
SRUTI - 6 - 4	3/8	1/4	4.82	5/8	11/16	9/16	16.76	15.24	19.30	17.78	46.22	23.11	21.59	60.96	30.48	28.95
SRUTI - 8 - 4	1/2	1/4	4.82	13/16	7/8	9/16	22.86	15.24	21.84	17.78	51.81	25.90	24.38	72.13	36.06	31.75
SRUTI - 8 - 6	1/2	3/8	7.11	13/16	7/8	11/16	22.86	16.76	21.84	19.30	51.81	25.90	25.90	72.13	36.06	33.27
SRUTI - 12 - 6	3/4	3/8	7.11	1 1/16	1 1/8	11/16	24.38	16.76	21.84	19.30	59.43	29.71	29.71	79.75	39.87	37.08
SRUTI - 12 - 8	3/4	1/2	10.41	1 1/16	1 1/8	7/8	24.38	22.86	21.84	21.84	59.43	29.71	29.71	79.75	39.87	39.87
SRUTI - 16 - 6	1	3/8	7.11	1 3/8	1 1/2	1 1/16	31.24	16.76	26.41	19.30	73.66	36.83	34.54	98.04	49.02	41.91
SRUTI - 16 - 8	1	1/2	10.41	1 3/8	1 1/2	7/8	31.24	21.84	26.41	22.86	73.66	36.83	34.54	98.04	49.02	44.70
SRUTI - 16 - 12	1	3/4	15.74	1 3/8	1 1/2	1 1/8	31.24	24.38	26.41	21.84	73.66	36.83	34.54	98.04	49.02	44.70

### Connects Metric Tubes

Part No.	Tube O.D.		d Min	Width Across Flat			A	A1	B	B1	I	I1	I2	L	L1	L2
	D (mm)	D1 (mm)		h (mm)	H (mm)	H1 (mm)										
SRUTI - 8 - 6	1/2	3/8	7.11	20.6	22.2	17.4	22.86	16.76	21.84	19.30	51.81	25.90	25.90	72.13	36.06	33.27
SRUTI - 12 - 6	3/4	3/8	7.11	27	28.6	17.4	24.38	16.76	21.84	19.30	59.43	29.71	29.71	79.75	39.87	37.08
SRUTI - 12 - 8	3/4	1/2	10.41	27	28.6	22.2	24.38	22.86	21.84	21.84	59.43	29.71	29.71	79.75	39.87	39.87
SRUTI - 16 - 6	1	3/8	7.11	34.9	38.1	27	31.24	16.76	26.41	19.30	73.66	36.83	34.54	98.04	49.02	41.91
SRUTI - 16 - 8	1	1/2	10.41	34.9	38.1	22.2	31.24	21.84	26.41	22.86	73.66	36.83	34.54	98.04	49.02	44.70
SRUTI - 16 - 12	1	3/4	15.74	34.9	38.1	28.6	31.24	24.38	26.41	21.84	73.66	36.83	34.54	98.04	49.02	44.70

# SMBTI Male Branch Tee



### Connects Fractional Tubes To Female NPT Thread

Part No.	Tube O.D. D (inch)	T* (NPT)	d Min	Width Across Flat		A	B	I	L	L1
				h (inch)	H (inch)					
SMBTI - 4 - 2N	1/4	1/8	4.82	1/2	9/16	15.24	17.78	19.55	26.92	18.79
SMBTI - 4 - 4N	1/4	1/4	4.82	1/2	9/16	15.24	17.78	19.55	26.92	23.36
SMBTI - 6 - 4N	3/8	1/4	7.11	5/8	11/16	16.76	19.30	23.11	30.48	25.40
SMBTI - 6 - 6N	3/8	3/8	7.11	5/8	11/16	16.76	19.30	23.10	30.48	28.19
SMBTI - 8 - 6N	1/2	3/8	9.65	13/16	7/8	22.86	21.84	25.90	36.06	28.19
SMBTI - 8 - 8N	1/2	1/2	10.41	13/16	7/8	22.86	21.84	25.90	36.06	33.02
SMBTI - 12 - 12N	3/4	3/4	15.74	1-1/16	1-1/8	24.38	21.84	29.71	39.87	36.83

All dimensions in millimeters unless specified as "inch". Dimension are for reference only, subject to change. Any size not in the list is available upon request.

# SMBTI

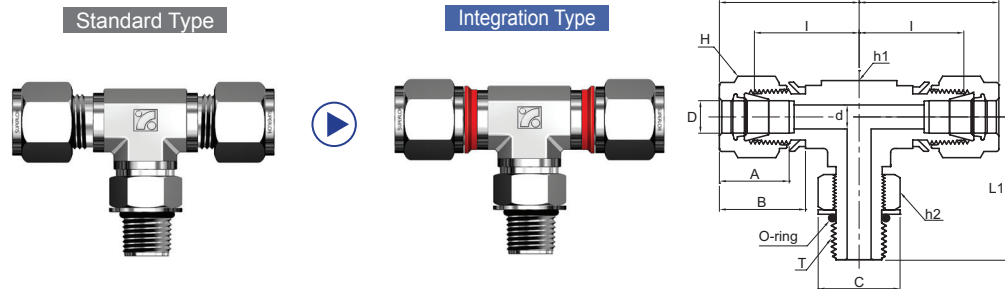
## Male Branch Tee

Connects Metric Tubes To Female ISO Tapered Thread

Part No.	Tube O.D. D (mm)	T* (NPT)	d Min	Width Across Flat		A	B	I	L	L <sub>1</sub>
				h (mm)	H (mm)					
SMBTI - 6M - 2R	6	1/8	4.8	12.7	14	15.3	17.7	19.6	27.0	18.8
SMBTI - 6M - 4R	6	1/4	4.8	12.7	14	15.3	17.7	19.6	27.0	23.4
SMBTI - 8M - 4R	8	1/4	6.4	15.9	16	16.2	18.6	22.4	29.9	25.4
SMBTI - 10M - 4R	10	1/4	7.1	17.5	19	17.2	19.5	23.9	31.5	28.2
SMBTI - 10M - 6R	10	3/8	7.9	17.5	19	17.2	19.5	23.9	31.5	28.2
SMBTI - 12M - 4R	12	1/4	7.1	20.6	22	22.8	22.0	25.9	36.0	28.2
SMBTI - 12M - 6R	12	3/8	9.5	20.6	22	22.8	22.0	25.9	36.0	28.2
SMBTI - 12M - 8R	12	1/2	9.5	20.6	22	22.8	22.0	25.9	36.0	33.0
SMBTI - 16M - 6R	16	3/8	9.5	25.4	25	24.4	22.0	27.9	38.0	30.2
SMBTI - 16M - 8R	16	1/2	11.9	25.4	25	24.4	22.0	27.9	38.0	35.1
SMBTI - 20M - 12R	20	3/4	15.9	31.8	32	26.0	22.0	34.5	44.6	41.7

# SPMBTI

## Positionable Male Branch Tee



Connects Fractional Tubes To Female ISO Parallel Thread

Part No.	Tube O.D. D (inch)	T (PF)	d Min	Width Across Flat			A	B	I	L	L <sub>1</sub>	C
				h1	h2	H						
SPMBTI - 4 - 2G	1/4	1/8	4.06	1/2	9/16	9/16	15.24	17.78	19.56	26.92	26.42	17.27
SPMBTI - 4 - 4G	1/4	1/4	4.83	5/8	3/4	9/16	15.24	17.78	21.59	28.96	32.26	22.86
SPMBTI - 6 - 4G	3/8	1/4	5.08	5/8	3/4	11/16	15.24	19.30	23.11	30.48	32.26	22.86
SPMBTI - 8 - 6G	3/8	3/8	7.87	13/16	7/8	7/8	22.86	21.84	25.91	36.07	37.08	26.42
SPMBTI - 8 - 8G	1/2	1/2	10.41	15/16	1-1/16	7/8	22.86	21.84	27.94	38.10	43.43	32.00
SPMBTI - 12 - 8G	3/4	1/2	11.94	1-1/16	1-1/16	1-1/8	24.38	21.84	29.72	39.88	45.21	32.00
SPMBTI - 12 - 12G	3/4	3/4	15.75	1-1/16	1-3/8	1-1/8	24.38	21.84	29.72	39.88	48.77	41.15
SPMBTI - 16 - 16G	1	1	19.81	1-3/8	1-5/8	1-1/2	31.24	26.42	36.83	49.02	53.59	48.51

Connects Metric Tubes To Female ISO Parallel Thread

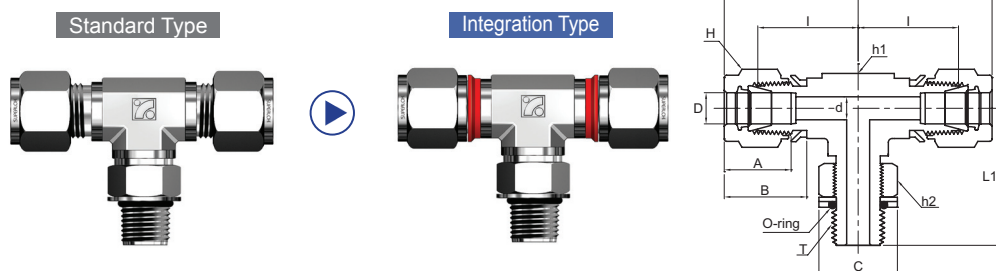
Part No.	Tube O.D. D (mm)	T (PF)	d Min	Width Across Flat			A	B	I	L	L <sub>1</sub>	C
				h1	h2	H						
SPMBTI - 6M - 2G	6	1/8	4.0	12.7	14.3	14	15.3	17.7	19.6	27.0	26.4	17.3
SPMBTI - 6M - 4G	6	1/4	4.8	15.8	19	14	15.3	17.7	21.6	29.0	32.3	22.9
SPMBTI - 8M - 2G	8	1/8	4.0	14.3	14.3	16	16.2	18.6	21.3	28.8	37.4	17.3
SPMBTI - 8M - 4G	8	1/4	5.9	15.8	19	16	16.2	18.6	22.4	29.9	32.2	22.9
SPMBTI - 10M - 4G	10	1/4	5.9	20.6	19	19	17.2	19.5	25.9	33.5	35.0	22.9
SPMBTI - 12M - 8G	12	1/4	9.5	23.8	27	22	22.8	22.0	27.9	38.0	35.0	32.0

All dimensions in millimeters unless specified as "inch". Dimension are for reference only, subject to change  
Any size not in the list is available upon request.



# SPMBTI

## Positionable Male Branch Tee



### Connects Fractional Tubes To SAE/MS Straight Thread Boss

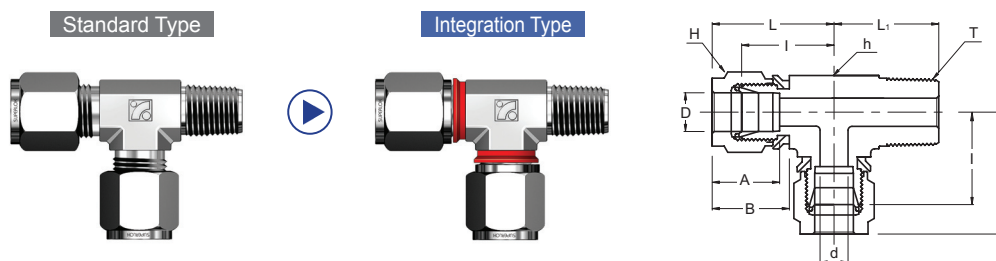
Part No.	Tube O.D. D (inch)	T (U)	d Min	Width Across Flat			A	B	I	L	L1	C
				h1	h2	H						
SPMBTI - 4 - 4U	1/4	7/16-20	4.83	1/2	9/16	9/16	15.24	17.78	21.08	28.45	28.45	16.51
SPMBTI - 6 - 6U	3/8	9/16-18	7.11	5/8	11/16	11/16	16.76	19.30	24.64	32.00	32.26	20.07
SPMBTI - 8 - 8U	1/2	3/4-16	10.41	13/16	7/8	7/8	22.86	21.84	27.43	37.59	37.85	25.65
SPMBTI - 12 - 12U	3/4	1-1/16-12	15.75	1-1/16	1-1/4	1-1/8	24.38	21.84	31.24	41.40	48.77	36.58
SPMBTI - 16 - 16U	1	1-5/16-12	22.35	1-3/8	1-1/2	1-1/2	31.24	26.42	38.35	50.55	53.59	43.94

### Connects Metric Tubes To SAE/MS Straight Thread Boss

Part No.	Tube O.D. D (mm)	T (U)	d Min	Width Across Flat			A	B	I	L	L1	C
				h1	h2	H						
SPMBTI - 6M - 8U	6	7/16-20	4.83	12.7	14.3	14.3	15.24	17.78	21.08	28.45	28.45	16.51
SPMBTI - 12M - 8U	12	3/4-16	10.41	20.6	22.2	22.2	22.86	21.84	27.43	37.59	37.85	25.65
SPMBTI - 18M - 12U	18	1-1/16-12	15.75	27	31.7	28.8	24.38	21.84	31.24	41.40	48.77	36.58
SPMBTI - 25M - 16U	20	1-5/16-12	22.35	34.9	38.1	38.1	31.24	26.42	38.35	50.55	53.59	43.94

# SMRTI

## Male Run Tee



### Connects Fractional Tubes To Female NPT Thread

Part No.	Tube O.D. D (inch)	T* (NPT)	d Min	Width Across Flat		A	B	I	L	L1
				h (inch)	H (inch)					
SMRTI - 4 - 2N	1/4	1/8	4.82	1/2	9/16	15.24	17.78	19.55	26.92	18.79
SMRTI - 4 - 4N	1/4	1/4	4.82	1/2	9/16	15.24	17.78	19.55	26.92	23.36
SMRTI - 6 - 4N	3/8	1/4	7.11	5/8	11/16	16.76	19.30	23.11	30.48	25.40
SMRTI - 6 - 6N	3/8	3/8	7.11	5/8	11/16	16.76	19.30	23.10	30.48	28.19
SMRTI - 8 - 6N	1/2	3/8	9.65	13/16	7/8	22.86	21.84	25.90	36.06	28.19
SMRTI - 8 - 8N	1/2	1/2	10.41	13/16	7/8	22.86	21.84	25.90	36.06	33.02
SMRTI - 12 - 12N	3/4	3/4	15.74	1-1/16	1-1/8	24.38	21.84	29.71	39.87	36.83

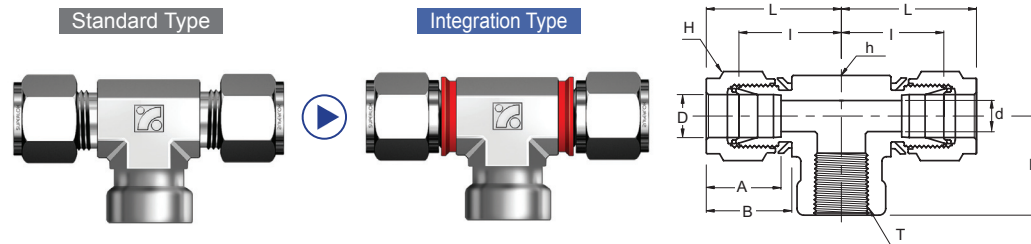
All dimensions in millimeters unless specified as "inch". Dimension are for reference only, subject to change. Any size not in the list is available upon request.

## SMRTI Male Run Tee

Connects Metric Tubes To Female ISO Tapered Thread

Part No.	Tube O.D. D (mm)	T* (NPT)	d Min	Width Across Flat		A	B	I	L	L1
				h (mm)	H (mm)					
SMRTI - 6M - 2R	6	1/8	4.8	12.7	14	15.3	17.7	19.6	27.0	18.8
SMRTI - 6M - 4R	6	1/4	4.8	12.7	14	15.3	17.7	19.6	27.0	23.4
SMRTI - 8M - 4R	8	1/4	6.4	15.9	16	16.2	18.6	22.4	29.9	25.4
SMRTI - 10M - 4R	10	1/4	7.1	17.5	19	17.2	18.6	22.4	29.9	25.4
SMRTI - 10M - 6R	10	3/8	7.9	17.5	19	17.2	19.5	23.9	31.5	28.2
SMRTI - 12M - 4R	12	1/4	7.1	20.6	22	22.8	22.0	25.9	36.0	28.2
SMRTI - 12M - 8R	12	1/2	9.5	20.6	22	22.8	22.0	25.9	36.0	33.0
SMRTI - 16M - 6R	16	3/8	9.5	25.4	25	24.4	22.0	27.9	38.0	30.2
SMRTI - 16M - 8R	16	1/2	11.9	25.4	25	24.4	22.0	27.9	38.0	35.1
SMRTI - 20M - 12R	20	3/4	15.9	31.8	32	26.0	22.0	34.5	44.6	41.7

## SFBTI Female Branch Tee



Connects Fractional Tubes to Male NPT Thread

Part No.	Tube O.D. D (inch)	T* (NPT)	d Min	Width Across Flat		A	B	I	L	L1
				h (inch)	H (inch)					
SFBTI - 4 - 2N	1/4	1/8	4.82	1/2	9/16	15.24	17.78	26.41	26.92	19.05
SFBTI - 4 - 4N	1/4	1/4	4.82	11/16	9/16	15.24	17.78	26.41	29.71	22.35
SFBTI - 6 - 4N	3/8	1/4	7.11	11/16	11/16	16.76	19.30	26.41	31.24	22.35
SFBTI - 6 - 6N	3/8	3/8	7.11	13/16	11/16	16.76	19.30	26.41	33.27	22.35
SFBTI - 6 - 8N	3/8	1/2	7.11	1	11/16	16.76	19.30	26.41	36.07	28.45
SFBTI - 8 - 4N	1/2	1/4	10.41	13/16	7/8	22.86	21.84	26.41	36.06	22.35
SFBTI - 8 - 6N	1/2	3/8	10.41	13/16	7/8	22.86	21.84	26.41	36.06	22.35
SFBTI - 8 - 8N	1/2	1/2	10.41	1	7/8	22.86	21.84	26.41	38.86	28.44
SFBTI - 16 - 12N	1	3/4	22.35	1-3/8	1-1/2	31.24	26.41	36.83	49.02	31.75
SFBTI - 16 - 16N	1	1	22.35	1-11/16	1-1/2	31.24	26.41	41.40	53.59	38.10

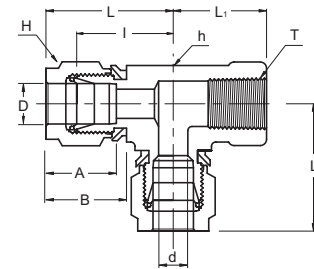
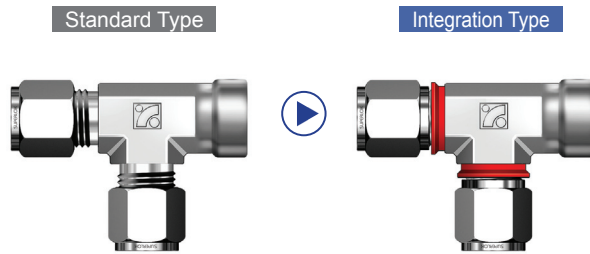
Connects Metric Tubes To Male NPT Thread

Part No.	Tube O.D. D (mm)	T* (NPT)	d Min	Width Across Flat		A	B	I	L	L1
				h (mm)	H (mm)					
SFBTI - 6M - 4N	6	1/4	4.8	17.46	14	15.3	17.7	22.4	29.8	22.4
SFBTI - 6M - 6N	6	3/8	4.8	20.63	14	15.3	17.7	24.4	31.7	22.4
SFBTI - 6M - 8N	6	1/2	4.8	25.40	14	15.3	17.7	27.2	34.5	28.4
SFBTI - 8M - 2N	8	1/8	6.4	15.98	16	16.2	18.6	22.4	39.9	19.0
SFBTI - 8M - 4N	8	1/4	6.4	17.46	16	16.2	18.6	23.1	30.6	22.4
SFBTI - 8M - 6N	8	3/8	6.4	20.63	16	16.2	18.6	25.2	32.4	22.4
SFBTI - 8M - 8N	8	1/2	6.4	25.40	16	16.2	18.6	28.0	35.2	28.4
SFBTI - 10M - 4N	10	1/4	7.9	20.63	19	17.2	19.5	25.9	33.5	22.4
SFBTI - 12M - 4N	12	1/4	9.5	20.63	22	22.8	22.0	25.9	36.0	22.4
SFBTI - 12M - 6N	12	3/8	9.5	20.63	22	22.8	22.0	25.9	36.0	22.4
SFBTI - 16M - 8N	16	1/2	12.7	25.40	25	24.4	22.0	28.7	38.8	28.4

All dimensions in millimeters unless specified as "inch". Dimension are for reference only, subject to change. Any size not in the list is available upon request.

# SFRTI

## Female Run Tee



### Connects Fractional Tubes To Male NPT Thread

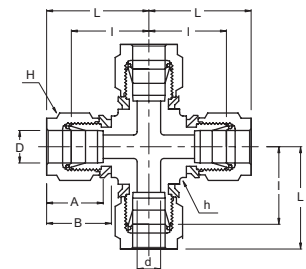
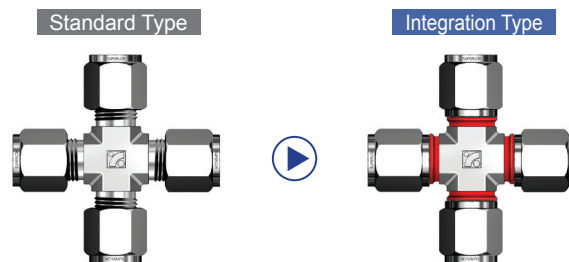
Part No.	Tube O.D. D (inch)	T* (NPT)	d Min	Width Across Flat		A	B	I	L	L1
				h (inch)	H (inch)					
SFRTI - 4 - 2N	1/4	1/8	4.82	1/2	9/16	15.24	17.78	19.55	26.92	26.92
SFRTI - 4 - 4N	1/4	1/4	4.82	11/16	9/16	15.24	17.78	22.35	29.71	29.71
SFRTI - 6 - 4N	3/8	1/4	7.11	11/16	11/16	16.76	19.30	23.87	31.24	31.24
SFRTI - 8 - 6N	1/2	3/8	10.41	13/16	7/8	22.86	21.84	25.90	36.06	36.06
SFRTI - 8 - 8N	1/2	1/2	10.41	1	7/8	22.86	21.84	28.70	39.87	39.87
SFRTI - 12 - 12N	3/4	3/4	15.74	1-3/8	1-1/8	24.38	21.84	34.54	44.70	44.70
SFRTI - 16 - 12N	1	3/4	22.35	1-3/8	1-1/2	31.24	26.41	36.83	49.02	49.02
SFRTI - 16 - 16N	1	1	22.35	1-11/16	1-1/2	31.24	26.41	41.40	53.59	53.59

### Connects Metric Tubes To Male NPT Thread

Part No.	Tube O.D. D (mm)	T* (NPT)	d Min	Width Across Flat		A	B	I	L	L1
				h (mm)	H (mm)					
SFRTI - 6M - 4N	6	1/4	4.8	17.4	14	15.3	22.4	22.4	29.8	22.4
SFRTI - 6M - 8N	6	1/2	4.8	25.4	14	15.3	27.2	27.2	34.5	28.4
SFRTI - 8M - 8N	8	1/8	6.4	15.8	16	16.2	22.4	22.4	29.9	19.0
SFRTI - 8M - 4N	8	1/4	6.4	17.4	16	16.2	23.1	23.1	30.6	22.4
SFRTI - 8M - 6N	8	3/8	6.4	20.6	16	16.2	25.2	25.2	32.4	22.4
SFRTI - 8M - 8N	8	1/2	6.4	25.4	16	16.2	28.0	28.0	35.2	28.4
SFRTI - 12M - 4N	12	1/4	9.5	20.6	22	22.8	25.9	25.9	33.5	22.4
SFRTI - 12M - 6N	12	3/8	9.5	20.6	22	22.8	25.9	25.9	36.0	22.4
SFRTI - 16M - 8N	16	1/2	12.7	25.4	25	24.4	22.0	29.7	39.8	28.4

# SUCI

## Union Cross



### Connects Fractional Tubes

Part No.	Tube O.D. D (inch)	d Min	Width Across Flat		A	B	I	L
			h (inch)	H (inch)				
SUCI - 4	1/4	4.82	1/2	9/16	15.24	17.78	19.55	26.92
SUCI - 6	3/8	7.11	5/8	11/16	16.76	19.30	23.11	30.48
SUCI - 8	1/2	10.41	13/16	7/8	22.86	21.84	25.90	36.06
SUCI - 12	3/4	15.74	1	1-1/8	24.38	21.84	29.71	39.87
SUCI - 16	1	22.35	1-3/8	1-1/2	31.24	26.41	36.83	49.02

All dimensions in millimeters unless specified as "inch". Dimension are for reference only, subject to change Any size not in the list is available upon request.



# SUCI

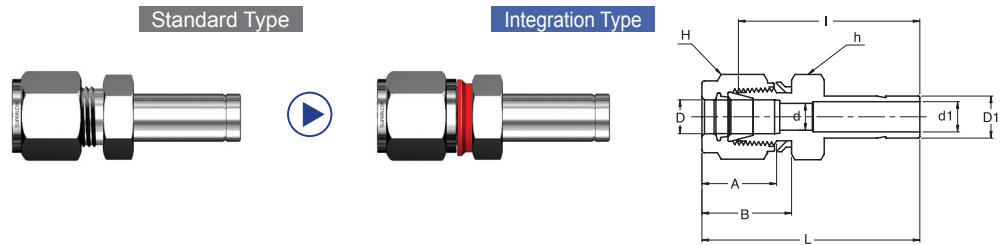
## Union Cross

Connects Metric Tubes

Part No.	Tube O.D. D (mm)	d Min	Width Across Flat		A	B	I	L
			h (mm)	H (mm)				
SUCI - 6M	6	4.8	12.7	14	15.3	17.7	19.6	27.0
SUCI - 8M	8	6.4	15.9	16	16.2	18.6	22.4	29.9
SUCI - 10M	10	7.9	20.6	19	17.2	19.5	25.9	33.5
SUCI - 12M	12	9.5	20.6	22	22.8	22.0	25.9	36.0
SUCI - 16M	16	12.7	23.8	25	24.4	22.0	26.9	37.0
SUCI - 18M	18	15.1	25.4	30	24.4	22.0	28.2	38.3
SUCI - 20M	20	15.9	34.9	32	26.0	22.0	34.5	44.6
SUCI - 25M	25	21.8	34.9	38	31.3	36.5	36.8	49.1

# SRI

## Reducer



Connects Fractional Tubes To Fractional SUPERLOK Port

Part No.	Tube O.D.		d Min	d1 Min	Width Across Flat		A	B	I	L
	D (inch)	D <sub>1</sub> (inch)			h (inch)	H (inch)				
SRI - 4 - 2	1/4	1/8	4.83	2.1	1/2	9/16	15.24	17.78	29.46	36.83
SRI - 4 - 3	1/4	3/16	4.83	3.0	1/2	9/16	15.24	17.78	30.22	37.59
SRI - 4 - 4	1/4	1/4	4.83	4.4	1/2	9/16	15.24	17.78	31.75	39.11
SRI - 4 - 5	1/4	5/16	4.83	5.6	1/2	9/16	15.24	17.78	32.51	39.87
SRI - 4 - 6	1/4	3/8	4.83	6.9	1/2	9/16	15.24	17.78	33.27	40.64
SRI - 4 - 8	1/4	1/2	4.83	9.4	9/16	9/16	15.24	17.78	38.86	46.22
SRI - 4 - 10	1/4	5/8	4.83	12.0	11/16	9/16	15.24	17.78	40.64	48.00
SRI - 4 - 12	1/4	3/4	4.83	14.8	13/16	9/16	15.24	17.78	41.40	47.75
SRI - 6 - 4	3/8	1/4	7.11	4.4	5/8	11/16	16.76	19.30	34.03	41.40
SRI - 6 - 6	3/8	3/8	7.11	6.9	5/8	11/16	16.76	19.30	35.81	43.18
SRI - 6 - 8	3/8	1/2	7.11	9.4	5/8	11/16	16.76	19.30	41.14	48.51
SRI - 6 - 10	3/8	5/8	7.11	12.0	11/16	11/16	16.76	19.30	42.92	50.29
SRI - 6 - 12	3/8	3/4	7.11	14.8	13/16	11/16	16.76	19.30	42.92	50.29
SRI - 8 - 4	1/2	1/4	10.41	4.4	13/16	7/8	22.86	21.84	34.79	44.95
SRI - 8 - 6	1/2	3/8	10.41	6.9	13/16	7/8	22.86	21.84	36.57	46.73
SRI - 8 - 8	1/2	1/2	10.41	9.4	13/16	7/8	22.86	21.84	42.16	52.32
SRI - 8 - 10	1/2	5/8	10.41	12.0	13/16	7/8	22.86	21.84	43.68	53.84
SRI - 8 - 12	1/2	3/4	10.41	14.8	13/16	7/8	22.86	21.84	43.68	53.84
SRI - 8 - 16	1/2	1	10.41	20.4	1-1/16	7/8	22.86	21.84	50.03	60.19
SRI - 12 - 8	3/4	1/2	15.74	9.4	1-1/16	1-1/8	24.38	21.84	44.45	54.61
SRI - 12 - 16	3/4	1	15.74	20.4	1-1/16	1-1/8	24.38	21.84	52.32	62.48

All dimensions in millimeters unless specified as "inch". Dimension are for reference only, subject to change  
Any size not in the list is available upon request.

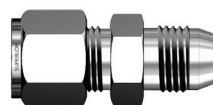
# SRI Reducer

Connects Metric Tubes To Metric **SUPERLOK** Port

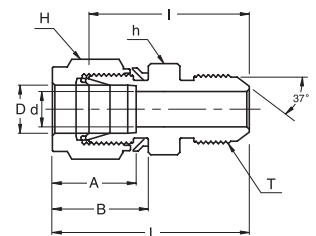
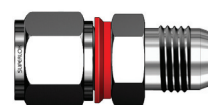
Part No.	Tube O.D.		d Min	d1 Min	Width Across Flat		A	B	I	L
	D (mm)	D <sub>1</sub> (mm)			h (mm)	H (mm)				
SRI - 6M - 8M	6	8	4.8	5.6	14	14	15.3	17.7	32.5	39.9
SRI - 6M - 10M	6	10	4.8	7.1	14	14	15.3	17.7	33.3	40.7
SRI - 8M - 6M	8	6	6.4	4.1	15	16	16.2	18.6	32.8	40.3
SRI - 8M - 10M	8	10	6.4	7.1	15	16	16.2	18.6	34.5	42.0
SRI - 8M - 12M	8	12	6.4	8.8	15	16	16.2	18.6	40.1	47.6
SRI - 10M - 6M	10	6	7.9	4.1	18	19	17.2	19.5	34.8	42.4
SRI - 10M - 8M	10	8	7.9	5.6	18	19	17.2	19.5	35.8	43.4
SRI - 10M - 12M	10	12	7.9	8.8	18	19	17.2	19.5	42.2	49.8
SRI - 10M - 15M	10	15	7.9	11.2	18	19	17.2	19.5	43.7	51.3
SRI - 10M - 18M	10	18	7.9	13.9	22	19	17.2	19.5	43.7	51.3
SRI - 12M - 6M	12	10	9.5	7.1	22	22	22.8	22.0	36.6	46.7
SRI - 12M - 6M	12	16	9.5	12.0	22	22	22.8	22.0	43.7	53.8
SRI - 12M - 6M	12	18	9.5	13.9	22	22	22.8	22.0	43.7	53.8
SRI - 12M - 6M	12	20	9.5	15.5	22	22	22.8	22.0	46.0	56.1
SRI - 12M - 6M	12	22	9.5	17.9	24	22	22.8	22.0	46.0	56.1
SRI - 12M - 6M	12	25	9.5	19.7	27	22	22.8	22.0	52.3	62.4
SRI - 16M - 6M	16	12	12.7	8.8	27	25	24.4	22.0	42.9	53.0
SRI - 18M - 6M	18	12	15.1	8.8	27	30	24.4	22.0	44.5	54.6
SRI - 18M - 6M	18	16	15.1	12.0	27	30	24.4	22.0	46.0	56.1
SRI - 18M - 6M	18	20	15.1	15.5	27	30	24.4	22.0	47.5	57.6
SRI - 18M - 6M	18	22	15.1	17.9	27	30	24.4	22.0	47.5	57.6
SRI - 20M - 22M	20	22	15.9	17.9	30	32	26.0	22.0	49.3	59.4
SRI - 20M - 25M	20	25	15.9	19.9	30	32	26.0	22.0	54.1	64.2
SRI - 25M - 18M	25	18	21.8	13.9	35	38	31.3	26.5	50.8	63.4
SRI - 25M - 20M	25	20	21.8	15.5	35	38	31.3	26.5	52.3	64.6

## SAUI An Union

Standard Type



Integration Type



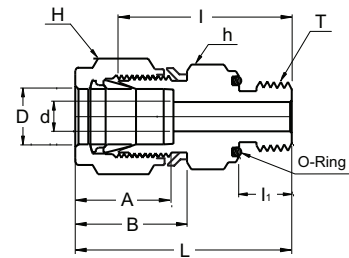
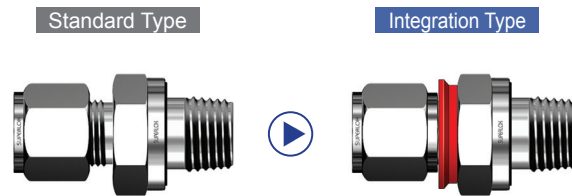
Connects Fractional Tubes To An Flared Tubes

Part No.	Tube O.D.	AN Tube Flare Size (inch)	Straight Thread T (U)	d Min	Width Across Flat		A	B	I	L
					h (inch)	H (inch)				
SAUI - 4 - 4U	1/4	1/4	5/16-24	4.31	1/2	9/16	15.24	17.78	30.22	37.59
SAUI - 6 - 4U	3/8	1/4	7/16-20	4.31	5/8	11/16	16.76	19.30	32.25	39.62
SAUI - 6 - 6U	3/8	3/8	9/16-18	7.11	5/8	11/16	16.76	19.30	32.25	39.62
SAUI - 8 - 8U	1/2	1/2	3/4-16	9.90	13/16	7/8	22.86	21.84	35.81	45.97
SAUI -12 - 12U	3/4	3/4	1-1/16-12	15.49	1-1/8	1-1/8	24.38	21.84	43.18	53.34
SAUI -16 - 16U	1	1	1-5/16-12	21.33	1-3/8	1-1/2	31.24	26.41	49.27	61.46

All dimensions in millimeters unless specified as "inch". Dimension are for reference only, subject to change. Any size not in the list is available upon request.

# SOPCI

## O-Seal Pipe Thread Connector



### Connects Fractional Tube To Female NPT Thread

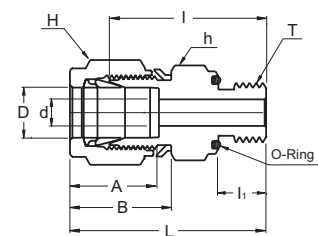
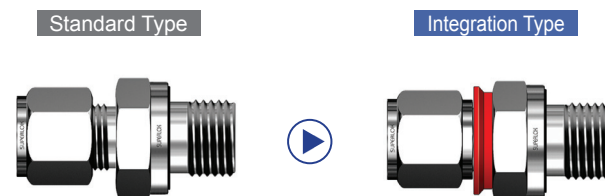
Part No.	Tube O.D. D (inch)	T* (NPT)	d Min	Width Across Flat		A	B	I	I <sub>1</sub>	L	O-Ring Uniform Size Number
				h (inch)	H (inch)						
SOPCI - 4 - 2N	1/4	1/8	4.82	3/4	9/16	15.24	17.78	27.68	7.11	35.05	-111
SOPCI - 4 - 4N	1/4	1/4	4.82	15/16	9/16	15.24	17.78	30.98	9.65	38.35	-113
SOPCI - 6 - 4N	3/8	1/4	7.11	15/16	11/16	16.76	19.30	32.51	9.65	39.87	-113
SOPCI - 6 - 6N	3/8	3/8	7.11	1-1/8	11/16	16.76	19.30	34.03	10.41	41.40	-116
SOPCI - 6 - 8N	3/8	1/2	7.11	1-5/16	11/16	16.76	19.30	39.62	13.46	46.99	-212
SOPCI - 8 - 8N	1/2	1/2	10.41	1-5/16	7/8	22.86	21.84	39.62	13.46	49.78	-212

### Connects Metric Tubes To An Flared Tubes

Part No.	Tube O.D.	AN Tube Flare Size (mm)	Straight Thread T (U)	d Min	Width Across Flat		A	B	I	L
					h (mm)	H (mm)				
SAUI - 6M - 4U	6	1/4	5/16-24	4.31	15.8	14.3	15.24	17.78	30.22	37.59
SAUI - 12M - 8U	12	1/2	3/4-16	9.90	20.6	22.2	22.86	21.84	35.81	45.97
SAUI - 18M - 12U	18	3/4	1-1/16-12	15.49	28.6	28.6	24.38	21.84	43.18	53.34
SAUI - 25M - 16U	20	1	1-5/16-12	21.33	34.9	38.1	31.24	26.41	49.27	61.46

# SOSCI

## O-Seal Straight Thread Connector



### Connects Fractional Tube To Female Straight Thread

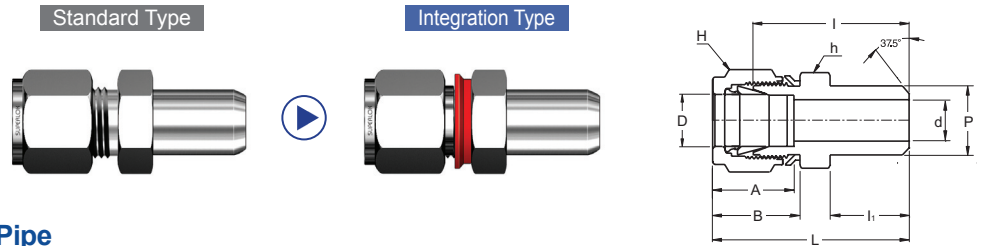
Part No.	Tube O.D. D (inch)	Straight Thread T (U)	d Min	Width Across Flat		A	B	I	I <sub>1</sub>	L	O-Ring Uniform Size Number
				h (inch)	H (inch)						
SOSCI - 4 - 4U	1/4	7/16-20	4.82	3/4	9/16	15.24	17.78	30.98	10.41	38.35	-111
SOSCI - 6 - 6U	3/8	9/16-18	7.11	15/16	11/16	16.76	19.30	35.05	11.93	42.41	-114
SOSCI - 8 - 8U	1/2	3/4-16	10.41	1-1/8	7/8	22.86	21.84	35.81	11.93	45.97	-116
SOSCI - 12 - 12U	3/4	1-1/16-12	15.75	1-1/2	1-1/8	24.38	21.84	42.16	14.22	52.32	-215
SOSCI - 16 - 16U	1	1-5/16-12	22.35	1-3/4	1-1/2	31.24	26.41	45.97	14.22	58.16	-219

### Connects Metric Tube To Female Straight Thread

Part No.	Tube O.D. D (mm)	Straight Thread T (U)	d Min	Width Across Flat		A	B	I	I <sub>1</sub>	L	O-Ring Uniform Size Number
				h (mm)	H (mm)						
SOSCI - 6M - 4U	6	7/16-20	4.82	19	14.3	15.24	17.78	30.98	10.41	38.35	-111
SOSCI - 12M - 8U	12	3/4-16	10.41	28.6	22.2	22.86	21.84	35.81	11.93	45.97	-116
SOSCI - 18M - 12U	18	1-1/16-12	15.75	38.1	28.6	24.38	21.84	42.16	14.22	52.32	-215
SOSCI - 25M - 16U	20	1-5/16-12	22.35	44.4	38.1	31.24	26.41	45.97	14.22	58.16	-219

All dimensions in millimeters unless specified as "inch". Dimension are for reference only, subject to change  
Any size not in the list is available upon request.

# SPWCI Male Pipe Weld Connector



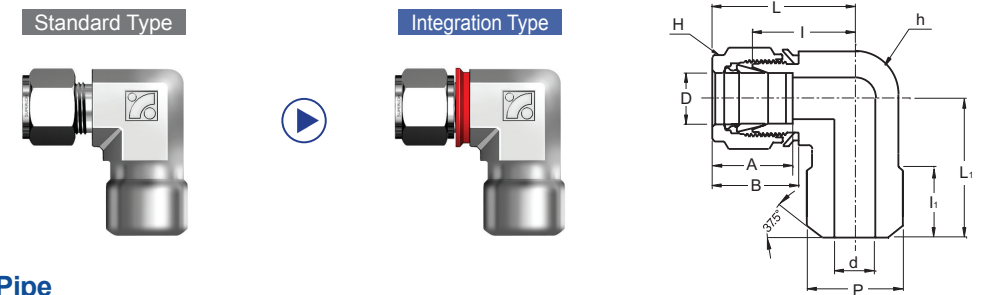
### Connects Fractional Tubes To Pipe

Part No.	Tube O.D. D (inch)	Male Pipe Size(P)		d Min	Width Across Flat		A	B	I	I <sub>1</sub>	L
		Nom.	O.D.		h (inch)	H (inch)					
SPWCI - 4 - 2P	1/4	1/8	10.30	4.82	1/2	9/16	15.24	17.78	25.40	9.65	32.76
SPWCI - 4 - 4P	1/4	1/4	13.70	4.82	9/16	9/16	15.24	17.78	30.48	14.22	37.84
SPWCI - 6 - 4P	3/8	1/4	13.70	7.11	5/8	11/16	16.76	19.30	32.51	14.22	39.87
SPWCI - 6 - 6P	3/8	3/8	17.10	7.11	11/16	11/16	16.76	19.30	32.51	14.22	39.87
SPWCI - 6 - 8P	3/8	1/2	21.30	7.11	7/8	11/16	16.76	19.30	38.86	19.05	46.22
SPWCI - 8 - 6P	1/2	3/8	17.10	10.41	13/16	7/8	22.86	21.84	33.27	14.22	43.43
SPWCI - 8 - 8P	1/2	1/2	21.30	10.41	7/8	7/8	22.86	21.84	38.86	19.05	49.02
SPWCI - 16 - 16P	1	1	33.40	33.40	1-3/8	1-1/2	31.24	26.41	50.03	23.87	62.23

### Connects Metric Tubes To Pipe

Part No.	Tube O.D. D (mm)	Male Pipe Size(P)		d Min	Width Across Flat		A	B	I	I <sub>1</sub>	L
		Nom.	O.D.		h (mm)	H (mm)					
SPWCI - 6M - 2P	6	1/5	10.3	4.8	14	14	15.3	17.7	25.4	9.4	32.8
SPWCI - 6M - 4P	6	1/4	13.7	4.8	14	14	15.3	17.7	30.5	14.2	37.9
SPWCI - 8M - 8P	8	1/2	21.3	6.4	22	16	16.2	18.6	38.1	19.0	45.6
SPWCI - 10M - 4P	10	1/4	13.7	7.1	18	19	17.2	19.5	33.3	14.2	40.9
SPWCI - 10M - 6P	10	3/8	17.1	7.9	18	19	17.2	19.5	33.3	14.2	40.9
SPWCI - 10M - 8P	10	1/2	21.3	7.9	22	19	17.2	19.5	38.9	19.0	46.5
SPWCI - 12M - 4P	12	1/4	13.7	7.1	22	22	22.8	22.0	33.3	14.2	43.4
SPWCI - 16M - 8P	16	1/2	21.3	12.7	24	25	24.4	22.0	38.9	19.0	49.0
SPWCI - 18M - 8P	18	1/2	21.3	13.5	27	30	24.4	22.0	40.4	19.0	50.5

# SMPWEI Male Pipe Weld Elbow



### Connects Fractional Tubes To Pipe

Part No.	Tube O.D. D (inch)	Male Pipe Size(P)		d Min	Width Across Flat		A	B	I	I <sub>1</sub>	L	L <sub>1</sub>
		Nom.	O.D.		h (inch)	H (inch)						
SMPWEI - 4 - 4P	1/4	1/4	13.70	4.82	1/2	9/16	15.24	17.78	19.55	14.22	26.90	23.37
SMPWEI - 6 - 4P	3/8	1/4	13.70	7.11	5/8	11/16	16.76	19.30	23.11	14.22	30.48	25.40
SMPWEI - 8 - 8P	1/2	1/2	21.30	10.41	13/16	7/8	22.86	21.84	25.90	19.05	36.06	33.02

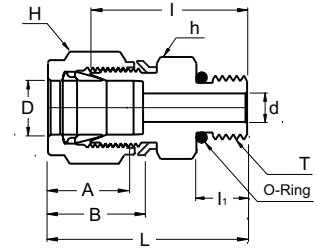
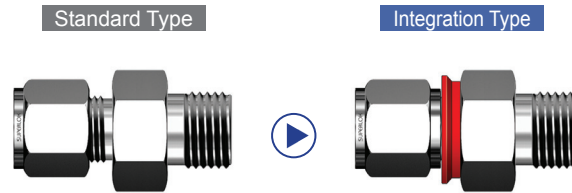
### Connects Metric Tubes To Pipe

Part No.	Tube O.D. D (mm)	Male Pipe Size(P)		d Min	Width Across Flat		A	B	I	I <sub>1</sub>	L	L <sub>1</sub>
		Nom.	O.D.		h (mm)	H (mm)						
SMPWEI - 6M - 4P	1/4	1/4	13.70	4.82	12.7	14.3	15.24	17.78	19.55	14.22	26.90	23.37
SMPWEI - 12M - 8P	1/2	1/2	21.30	10.41	20.6	22.2	22.86	21.84	25.90	19.05	36.06	33.02

All dimensions in millimeters unless specified as "inch". Dimension are for reference only, subject to change  
Any size not in the list is available upon request.



**SSMCI**  
SAE/MS Male  
Connector



**Connects Fractional Tubes To SAE/MS Straight Thread Boss**

Part No.	Tube O.D. D (inch)	Straight Thread T (U)	d Min	Width Across Flat		A	B	I	I1	L	O-Ring Uniform Size Number
				h (inch)	H (inch)						
SSMCI - 4 - 4U	1/4	7/16-20	4.82	9/16	9/16	15.24	17.78	26.67	9.14	34.03	3-904
SSMCI - 4 - 6U	1/4	9/16-18	4.82	11/16	9/16	15.24	17.78	28.19	9.90	35.56	3-906
SSMCI - 4 - 8U	1/4	3/4-16	4.82	7/8	9/16	15.24	17.78	30.22	11.17	37.59	3-908
SSMCI - 4 - 10U	1/4	7/8-14	4.82	1	9/16	15.24	17.78	33.27	12.70	40.64	3-910
SSMCI - 6 - 4U	3/8	7/16-20	5.08	5/8	11/16	16.76	19.30	28.19	9.14	35.56	3-904
SSMCI - 6 - 6U	3/8	9/16-18	7.11	11/16	11/16	16.76	19.30	29.71	9.90	37.08	3-906
SSMCI - 6 - 8U	3/8	3/4-16	7.11	7/8	11/16	16.76	19.30	31.75	11.17	39.11	3-908
SSMCI - 6 - 10U	3/8	7/8-14	7.11	1	11/16	16.76	19.30	34.79	12.70	42.16	3-910
SSMCI - 8 - 6U	1/2	9/16-18	7.11	13/16	7/8	22.86	21.84	28.95	9.90	39.11	3-906
SSMCI - 8 - 8U	1/2	3/4-16	10.41	7/8	7/8	22.86	21.84	31.75	11.17	41.91	3-908
SSMCI - 8 - 10U	1/2	7/8-14	10.41	1	7/8	22.86	21.84	34.79	12.70	44.95	3-910
SSMCI - 8 - 12U	1/2	1-1/16-12	10.41	1-1/4	7/8	22.86	21.84	38.86	14.98	49.02	3-912
SSMCI - 12 - 8U	3/4	3/4-16	10.66	1-1/16	1-1/8	24.38	21.84	35.81	11.17	45.97	3-908
SSMCI - 12 - 12U	3/4	1-1/16-12	15.74	1-1/4	1-1/8	24.38	21.84	38.86	14.98	49.02	3-912
SSMCI - 16 - 12U	1	1-1/16-12	16.76	1-3/8	1-1/2	31.24	26.41	41.14	14.98	53.34	3-912
SSMCI - 16 - 16U	1	1-5/16-12	22.35	1-1/2	1-1/2	31.24	26.41	42.16	14.98	54.35	3-916

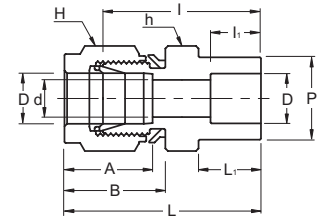
**Connects Metric Tubes To SAE/MS Straight Thread Boss**

Part No.	Tube O.D. D (mm)	Straight Thread T (U)	d Min	Width Across Flat		A	B	I	I1	L	O-Ring Uniform Size Number
				h (mm)	H (mm)						
SSMCI - 6M - 4U	6	7/16-20	4.82	14.3	14.3	15.24	17.78	26.67	9.14	34.03	3-904
SSMCI - 6M - 6U	6	9/16-18	4.82	17.4	14.3	15.24	17.78	28.19	9.90	35.56	3-906
SSMCI - 6M - 8U	6	3/4-16	4.82	22.2	14.3	15.24	17.78	30.22	11.17	37.59	3-908
SSMCI - 6M - 10U	6	7/8-14	4.82	25.4	14.3	15.24	17.78	33.27	12.70	40.64	3-910
SSMCI - 12M - 6U	12	9/16-18	7.11	20.6	22.2	22.86	21.84	28.95	9.90	39.11	3-906
SSMCI - 12M - 8U	12	3/4-16	10.41	22.2	22.2	22.86	21.84	31.75	11.17	41.91	3-908
SSMCI - 12M - 10U	12	7/8-14	10.41	25.4	22.2	22.86	21.84	34.79	12.70	44.95	3-910
SSMCI - 12M - 12U	12	1-1/16-12	10.41	31.7	22.2	22.86	21.84	38.86	14.98	49.02	3-912
SSMCI - 18M - 8U	18	3/4-16	10.66	27	28.6	24.38	21.84	35.81	11.17	45.97	3-908
SSMCI - 18M - 12U	18	1-1/16-12	15.74	34.9	28.6	24.38	21.84	38.86	14.98	49.02	3-912
SSMCI - 25M - 12U	20	1-1/16-12	16.76	34.9	38.1	31.24	26.41	41.14	14.98	53.34	3-912
SSMCI - 25M - 16U	20	1-5/16-12	22.35	38.1	38.1	31.24	26.41	42.16	14.98	54.35	3-916

All dimensions in millimeters unless specified as "inch". Dimension are for reference only, subject to change  
Any size not in the list is available upon request.

# SSWCI

## Tube Socket Weld Connector



### Connects Fractional Tubes

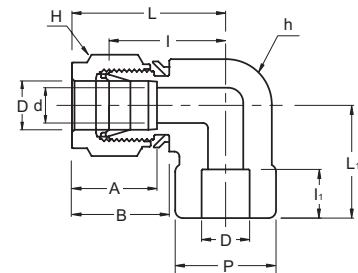
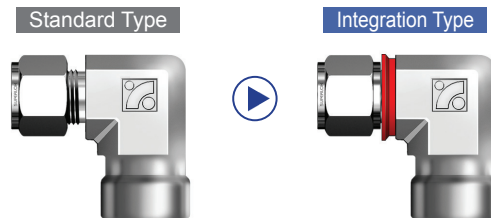
Part No.	Tube O.D. D (inch)	d Min	P	Width Across Flat		A	B	I	I <sub>1</sub>	L	L <sub>1</sub>
				h (inch)	H (inch)						
SSWCI - 4	1/4	4.82	11.17	1/2	9/16	15.24	17.78	26.16	7.87	33.52	10.41
SSWCI - 6	3/8	7.11	15.74	5/8	11/16	16.76	19.30	30.22	9.65	37.59	11.93
SSWCI - 8	1/2	10.41	19.05	13/16	7/8	22.86	21.84	30.98	12.70	41.14	11.93
SSWCI -12	3/4	15.74	26.67	1-1/16	1-1/8	24.38	21.84	33.27	14.22	43.43	11.93
SSWCI - 16	1	22.35	33.27	1-3/8	1-1/2	31.24	26.41	40.38	19.05	52.57	14.22

### Connects Metric Tubes

Part No.	Tube O.D. D (mm)	d Min	P	Width Across Flat		A	B	I	I <sub>1</sub>	L	L <sub>1</sub>
				h (mm)	H (mm)						
SSWCI - 6M	6	4.82	11.17	12.7	14.3	15.24	17.78	26.16	7.87	33.52	10.41
SSWCI - 12M	12	10.41	19.05	20.6	22.2	22.86	21.84	30.98	12.70	41.14	11.93
SSWCI - 18M	18	15.74	26.67	27	28.6	24.38	21.84	33.27	14.22	43.43	11.93
SSWCI - 25M	20	22.35	33.27	34.9	38.1	31.24	26.41	40.38	19.05	52.57	14.22

# SSWEI

## Tube Socket Weld Elbow



### Connects Fractional Tubes

Part No.	Tube O.D. D (inch)	d Min	P	Width Across Flat		A	B	I	I <sub>1</sub>	L	L <sub>1</sub>
				h (inch)	H (inch)						
SSWEI - 4	1/4	4.82	12.70	1/2	9/16	15.24	17.78	19.55	7.87	26.92	19.55
SSWEI - 6	3/8	7.11	15.75	5/8	11/16	16.76	19.30	23.11	9.65	30.48	23.11
SSWEI - 8	1/2	10.41	20.57	13/16	7/8	22.86	21.84	25.90	12.70	36.06	25.90
SSWEI - 12	3/4	15.74	26.92	1-1/16	1-1/8	24.38	21.84	29.71	14.22	39.87	29.71
SSWEI - 16	1	22.35	35.05	1-3/8	1-1/2	31.24	26.41	36.83	19.05	49.02	36.83

### Connects Metric Tubes

Part No.	Tube O.D. D (mm)	d Min	P	Width Across Flat		A	B	I	I <sub>1</sub>	L	L <sub>1</sub>
				h (mm)	H (mm)						
SSWEI - 6M	6	4.82	12.70	12.7	14.3	15.24	17.78	19.55	7.87	26.92	19.55
SSWEI - 12M	12	10.41	20.57	20.6	22.2	22.86	21.84	25.90	12.70	36.06	25.90
SSWEI -18M	18	15.74	26.92	27	28.6	24.38	21.84	29.71	14.22	39.87	29.71
SSWEI - 25M	20	22.35	35.05	34.9	38.1	31.24	26.41	36.83	19.05	49.02	36.83

All dimensions in millimeters unless specified as "inch". Dimension are for reference only, subject to change  
Any size not in the list is available upon request.

## Valve Series

- Key Operation Ball Valves
- Key Operation Needle Valves
- Ball Valves
- Integral Bonnet Needle Valves
- Union Bonnet Needle Valves
- Check Valves
- High Pressure Check Valves
- High Pressure Needle Valves
- Plug Valves
- Manifold Valves
- Vacuum Clamps
- Water Regulators
- Flexible Hoses
- Double Block & Bleed Valves
- Swing-Out Ball Valves
- Toggle Valves
- Bleed & Purge Valves
- Quick Connectors
- High Pressure Ball Valves
- Hydraulic Ball Valves
- Trunnion Ball Valves
- Rising Plug Valves
- Relief Valves
- Cryogenic Needle Valves
- Cryogenic Ball Valves
- Micron in-Line Filters
- Gauge Root Valves
- Hydraulic Flange and Components

## Fitting Series

- Integration Tube Fittings
- Tube Fittings (Compression Type)
- Instrument Thread Fittings
- Forged Fittings
- Bite Type Tube Fittings (DIN2353)
- Bite Type Tube Fittings (JIS B2351)
- 37 Flared Tube Fittings (SAE J514)
- O-Ring Face Seal Fittings
- Hose Connectors & Push-On Hose Fittings

## Electric Equipment

- MCPD(Molded Case Power Distributor)
- SPIDER
- Smart Eye Module

## BMT Co., Ltd.

21-1 Bukjeong-dong Yangsan  
Gyeongsangnam-do Korea  
Tel. 82-55-783-1000  
Fax. 82-55-783-1111  
[www.superlok.com](http://www.superlok.com)  
[superlok@superlok.com](mailto:superlok@superlok.com)

경상남도 양산시 북정동 21-1  
전화 : 055-783-1000  
팩스 : 055-783-1111  
[www.superlok.com](http://www.superlok.com)  
[superlok@superlok.com](mailto:superlok@superlok.com)

BMT - CITF Rev. 1 (12,03,30)

## Integration Tube Fitting Series



**“Perfect installation is guaranteed by I-Fitting”**